

JuliaMono – a monospaced font for scientific and technical writing

Herbert Voß*

October 15, 2025

Contents

1	Introduction	2
2	The font files	2
3	Font examples	5
3.1	JuliaMono Light	5
3.2	JuliaMono Regular	5
3.3	JuliaMono Medium	5
3.4	JuliaMono SemiBold	6
3.5	JuliaMono ExtraBold	6
3.6	JuliaMono Black	6
4	Contextual and stylistic alternates (»ligatures«)	9
4.1	Ligatures	9
4.2	Stylistic Alternatives	9
4.2.1	Slashed Zero	9
4.2.2	Stylistic Sets	10
4.2.3	Character Variations	10
5	Examples	11
6	The font list of JuliaMono	12

*Thanks to: Uwe Siart

1 Introduction

The typeface was introduced at the 2020 Julia Programming Language conference, JuliaCon as my contribution to the festivities. [1]

2 The font files

The font files are copyright by the »JuliaMono Project Authors« (<https://github.com/cormullion/juliamono>) with an OFL license »This Font Software is licensed under the SIL Open Font License, Version 1.1. This license is available with a FAQ at <https://scripts.sil.org/OFL>.



```
voss>juliamono:$ luafindfont juliamono
```

No.	Filename	Symbolic	Path
1.	JuliaMono-Black.ttf	juliamono	/Users/voss/Library/Fonts/JuliaMono/
2.	JuliaMono-BlackItalic.ttf	juliamono	/Users/voss/Library/Fonts/JuliaMono/
3.	JuliaMono-Bold.ttf	juliamono	/Users/voss/Library/Fonts/JuliaMono/
4.	JuliaMono-BoldItalic.ttf	juliamono	/Users/voss/Library/Fonts/JuliaMono/
5.	JuliaMono-ExtraBold.ttf	juliamono	/Users/voss/Library/Fonts/JuliaMono/
6.	JuliaMono-ExtraBoldItalic.ttf	juliamono	/Users/voss/Library/Fonts/JuliaMono/
7.	JuliaMono-Light.ttf	juliamono	/Users/voss/Library/Fonts/JuliaMono/
8.	JuliaMono-LightItalic.ttf	juliamono	/Users/voss/Library/Fonts/JuliaMono/
9.	JuliaMono-Medium.ttf	juliamono	/Users/voss/Library/Fonts/JuliaMono/
10.	JuliaMono-MediumItalic.ttf	juliamono	/Users/voss/Library/Fonts/JuliaMono/
11.	JuliaMono-Regular.ttf	juliamono	/Users/voss/Library/Fonts/JuliaMono/
12.	JuliaMono-RegularItalic.ttf	juliamono	/Users/voss/Library/Fonts/JuliaMono/
13.	JuliaMono-SemiBold.ttf	juliamono	/Users/voss/Library/Fonts/JuliaMono/
14.	JuliaMono-SemiBoldItalic.ttf	juliamono	/Users/voss/Library/Fonts/JuliaMono/

The package juliamono supports only the typewriter family with specific optional arguments:

<i>name</i>	<i>value</i>	<i>meaning</i>
DefaultFeatures	code	for all font styles
Light	false	
Medium	false	
Semi	false	
Black	false	
ExtraBold	false	
calt	true	Ligatures
zero	true	Slashed zero
Scale	1	
FakeStretch	1	

```
\usepackage[Light]{juliamono}% Regular and Italic
\ttfamily
Default text, \textbf{Bold text}, \textit{Italic text}, \textbf{\textit{Bold Italic text}}
```

Default text, **Bold text**, *Italic text*, ***Bold Italic text***

```
\usepackage[Medium]{juliamono}% Regular and Italic
\ttfamily
Default text, \textbf{Bold text}, \textit{Italic text}, \textbf{\textit{Bold Italic text}}
```

Default text, **Bold text**, *Italic text*, ***Bold Italic text***

```
\usepackage[Semi]{juliamono}% Bold and BoldItalic
\ttfamily
Default text, \textbf{Bold text}, \textit{Italic text}, \textbf{\textit{Bold Italic text}}
```

Default text, **Bold text**, *Italic text*, ***Bold Italic text***

```
\usepackage[ExtraBold]{juliamono}% Bold and BoldItalic
\ttfamily
Default text, \textbf{Bold text}, \textit{Italic text}, \textbf{\textit{Bold Italic text}}
```

Default text, **Bold text**, *Italic text*, ***Bold Italic text***

```
\usepackage[Black]{juliamono}% Bold and BoldItalic
\ttfamily
Default text, \textbf{Bold text}, \textit{Italic text}, \textbf{\textit{Bold Italic text}}
```

Default text, **Bold text**, *Italic text*, ***Bold Italic text***

The fonts are preset with Scale=0.92. For this documentation we use instead:

```
\usepackage[Scale=0.88,FakeStretch=0.9]{juliamono}
```

3 Font examples

3.1 JuliaMono Light

{}[](<>\$*-+=/_%^\&|~?'",.,;:!
 „i“Œ[]|≠¿'«Σ€⊕†Ω”∕øπ •±â,∂f⊙[ⓐ]Δ@æç√/μ i“Œ[]|≠¿'«Σ€⊕†Ω”∕øπ •±â,∂f⊙[ⓐ]Δ@æç√/μ
 “¬”£fi.¬¬°»„‰ „~ÁÛøΠ°•’Æefl 1óìï™íÁ≥‡ùçø() ~,÷- “¬”£fi.¬¬°»„‰ „~ÁÛøΠ°•’Æefl 1óìï™íÁ≥‡ùçø() ~,÷-

{}[](<>\$*-+=/_%^\&|~?'",.,;:!
(Italic)

„i“Œ[]|≠¿'«Σ€⊕†Ω”∕øπ •±â,∂f⊙[ⓐ]Δ@æç√/μ abcdefghijklmnopqrstuvwxyzáéóúàèòùçǻ 12345
 “¬”£fi.¬¬°»„‰ „~ÁÛøΠ°•’Æefl 1óìï™íÁ≥‡ùçø() ~,÷- ABCDEFGHIJKLMNOPQRSTUVWXYZÁÉÓÚÀÈÒÚÇǺ 67890

(Bold)

{}[](<>\$*-+=/_%^\&|~?'",.,;:!
 „i“Œ[]|≠¿'«Σ€⊕†Ω”∕øπ •±â,∂f⊙[ⓐ]Δ@æç√/μ i“Œ[]|≠¿'«Σ€⊕†Ω”∕øπ •±â,∂f⊙[ⓐ]Δ@æç√/μ
 “¬”£fi.¬¬°»„‰ „~ÁÛøΠ°•’Æefl 1óìï™íÁ≥‡ùçø() ~,÷- “¬”£fi.¬¬°»„‰ „~ÁÛøΠ°•’Æefl 1óìï™íÁ≥‡ùçø() ~,÷-

{}[](<>\$*-+=/_%^\&|~?'",.,;:!
(BoldItalic)

„i“Œ[]|≠¿'«Σ€⊕†Ω”∕øπ •±â,∂f⊙[ⓐ]Δ@æç√/μ abcdefghijklmnopqrstuvwxyzáéóúàèòùçǻ 12345
 “¬”£fi.¬¬°»„‰ „~ÁÛøΠ°•’Æefl 1óìï™íÁ≥‡ùçø() ~,÷- ABCDEFGHIJKLMNOPQRSTUVWXYZÁÉÓÚÀÈÒÚÇǺ 67890

(Italic)

{}[](<>\$*-+=/_%^\&|~?'",.,;:!
 „i“Œ[]|≠¿'«Σ€⊕†Ω”∕øπ •±â,∂f⊙[ⓐ]Δ@æç√/μ i“Œ[]|≠¿'«Σ€⊕†Ω”∕øπ •±â,∂f⊙[ⓐ]Δ@æç√/μ
 “¬”£fi.¬¬°»„‰ „~ÁÛøΠ°•’Æefl 1óìï™íÁ≥‡ùçø() ~,÷- “¬”£fi.¬¬°»„‰ „~ÁÛøΠ°•’Æefl 1óìï™íÁ≥‡ùçø() ~,÷-

{}[](<>\$*-+=/_%^\&|~?'",.,;:!

„i“Œ[]|≠¿'«Σ€⊕†Ω”∕øπ •±â,∂f⊙[ⓐ]Δ@æç√/μ

“¬”£fi.¬¬°»„‰ „~ÁÛøΠ°•’Æefl 1óìï™íÁ≥‡ùçø() ~,÷-

(BoldItalic)

abcdefghijklmnopqrstuvwxyzáéóúàèòùçǻ 12345

ABCDEFGHIJKLMNOPQRSTUVWXYZÁÉÓÚÀÈÒÚÇǺ 67890

{}[](<>\$*-+=/_%^\&|~?'",.,;:!

„i“Œ[]|≠¿'«Σ€⊕†Ω”∕øπ •±â,∂f⊙[ⓐ]Δ@æç√/μ

“¬”£fi.¬¬°»„‰ „~ÁÛøΠ°•’Æefl 1óìï™íÁ≥‡ùçø() ~,÷-

3.3 JuliaMono Medium

~abctdefghijklmnopqrstuvwxyzáéóúàèòùçǻ 12345

ABCDEFGHIJKLMNOPQRSTUVWXYZÁÉÓÚÀÈÒÚÇǺ 67890

{}[](<>\$*-+=/_%^\&|~?'",.,;:!

„i“Œ[]|≠¿'«Σ€⊕†Ω”∕øπ •±â,∂f⊙[ⓐ]Δ@æç√/μ

“¬”£fi.¬¬°»„‰ „~ÁÛøΠ°•’Æefl 1óìï™íÁ≥‡ùçø() ~,÷-

(Bold)

~abctdefghijklmnopqrstuvwxyzáéóúàèòùçǻ 12345

ABCDEFGHIJKLMNOPQRSTUVWXYZÁÉÓÚÀÈÒÚÇǺ 67890

{}[](<>\$*-+=/_%^\&|~?'",.,;:!

„i“Œ[]|≠¿'«Σ€⊕†Ω”∕øπ •±â,∂f⊙[ⓐ]Δ@æç√/μ

“¬”£fi.¬¬°»„‰ „~ÁÛøΠ°•’Æefl 1óìï™íÁ≥‡ùçø() ~,÷-

3.2 JuliaMono Regular

abcdefghijklmnopqrstuvwxyzáéóúàèòùçǻ 12345

ABCDEFGHIJKLMNOPQRSTUVWXYZÁÉÓÚÀÈÒÚÇǺ 67890

{}[](<>\$*-+=/_%^\&|~?'",.,;:!

„i“Œ[]|≠¿'«Σ€⊕†Ω”∕øπ •±â,∂f⊙[ⓐ]Δ@æç√/μ

“¬”£fi.¬¬°»„‰ „~ÁÛøΠ°•’Æefl 1óìï™íÁ≥‡ùçø() ~,÷-

{}[](<>\$*-+=/_%^\&|~?'",.,;:!

(Bold)

abcdefghijklmnopqrstuvwxyzáéóúàèòùçǻ 12345

ABCDEFGHIJKLMNOPQRSTUVWXYZÁÉÓÚÀÈÒÚÇǺ 67890

(Italic)

abcdefghijklmnopqrstuvwxyzáéóúàèòùçǻ 12345

ABCDEFGHIJKLMNOPQRSTUVWXYZÁÉÓÚÀÈÒÚÇǺ 67890

{}[](<>\$*-+=/_%^\&|~?'",.,;:!

„i“Œ[]|≠¿'«Σ€⊕†Ω”∕øπ •±â,∂f⊙[ⓐ]Δ@æç√/μ

“¬”£fi.¬¬°»„‰ „~ÁÛøΠ°•’Æefl 1óìï™íÁ≥‡ùçø() ~,÷-

The vertical rule shows that the complete tabular is set in the typewriter font.

Ancient Greek	Ἄδμηθ', ὁρᾷς γὰρ τὰμὰ πράγμαθ' ὥς ἔχει, λέξαι θέλω σοι πρὶν θανεῖν ἃ βούλομαι.
Armenian	Իմ օղաթիւը լի է օճաձկերով
Bulgarian	Я, пазачът Вальо уж бди, а скришом хапва кюфтенца зад щайгите.
Catalan	«Dóna amor que seràs feliç!». Això, il·lús company geniüt, ja és un lluït rètol blavís d'onze kWh.
Czech	Zvlášť zákeřný učeň s dolíčky běží podél zóny úlů
Danish	Quizdeltagerne spiste jordbær med fløde, mens cirkusklovnen Walther spillede på xylofon.
English	Sphinx of black quartz, judge my vow.
Estonian	Põdur Zagrebi tšellomängija-följetonist Ciqo külmetas kehvas garaažis
Finnish	Charles Darwin jammaili Åken hevixylofonilla Qatarin yöpub Zeligissä.
French	Voix ambiguë d'un cœur qui au zéphyr préfère les jattes de kiwi.
Georgian	ბნინათუ ყავისფერი მელა ახებდა ზარმაც ძაღლს.
German	Victor jagt zwölf Boxkämpfer quer über den großen Sylter Deich.
Greek	Ταχίστη αλώπηξ βαφής ψημένη γη, δρασκελίζει υπέρ νωθρού κυνός.
Guarani	Hĩlandiagua kuñanguéra oho peteĩ sa'yju ypa'ũme Gavõme ombo'e hağ ua ingyleñe'ẽ mitãnguérare ne'ẽndy'ỹ.
Hungarian	Jó foxim és don Quijote húszwattos lámpánál ülve egy pár bűvös cipőt készít.
IPA	[ɕʷʌʔ.nas.doːŋ.kʰl̥ja] [ŋan.n̥ɕi wo.ɕi uẽn.ɣwa]
Icelandic	Kæmi ný öxi hér, ykist þjófum nú bæði víl og ádrepa.
Irish	Ćuaig bé mórsác le dlúispád fíorfinn trí hata mo dea-þorcáin big.
Latvian	Muļķa hipiji mēģina brīvi nogaršot celofāna žņaudzējčūsku.
Lithuanian	Įlinkdama fechtuotojo špaga sublykčiojusi pragrėžė arvalų arbūzą.
Macedonian	Сидарски пејзаж: шугав билмез со чудење цвака кофте и кел на туѓ цех.
Norwegian	Jeg begynte å fortære en sandwich mens jeg kjørte taxi på vei til quiz
Polish	Pchnąć w tę łódź jeża lub ośm skrzyń fig.
Portuguese	Luís argüia à Júlia que «brações, fé, chá, óxido, pôr, zângão» eram palavras do português.
Romanian	Înjurând pițigăiat, zoofobul comandă vexat whisky și tequila.
Russian	Широкая электрификация южных губерний даст мощный толчок подъёму сельского хозяйства.
Scottish	Mus d'fhàg Cèit-Ùna ròp Ì le ob.
Serbian	Aјшо, лепото и чежњо, за љубав срца мога дођи у Хаџиће на кафу.

Spanish	Benjamín pidió una bebida de kiwi y fresa; Noé, sin vergüenza, la más champaña del menú.
Swedish	Flygande bäckasiner söka hwila på mjuka tuvor.
Turkish	Pijamalı hasta yağız şoföre çabucak güvendi.
Ukrainian	Чуєш їх, доцю, га? Кумедна ж ти, прощайся без гольфів!

4 Contextual and stylistic alternates (»ligatures«)

4.1 Ligatures

The ligatures with a double dash are only possible, if the \TeX ligatures are disabled, which is done by the package by default.

<i>In</i>	<i>Out</i>
->	→
=>	⇒
>	▷
<	◁
::	∴
<-	←
->	→
<->	↔

There are two commands to set and unset this behaviour. With \JuliaUnsetCalt the ligatures are reset to the ones from \TeX :

-> → => - (\TeX -active)	1 \ttfamily \JuliaUnsetCalt
→ →⇒ --- (\TeX -inactive)	2 -> --> => --- (\TeX -active)
	3
	4 \JuliaSetCalt
	5 -> --> => --- (\TeX -inactive)

4.2 Stylistic Alternatives

4.2.1 Slashed Zero

By default the zero has a slash instead of a dot:

0 0

It can be reset to the dot with the package option `zero=false` or inside the document with

$\text{\addfontfeature{RawFeature}=-zero}$

4.2.2 Stylistic Sets

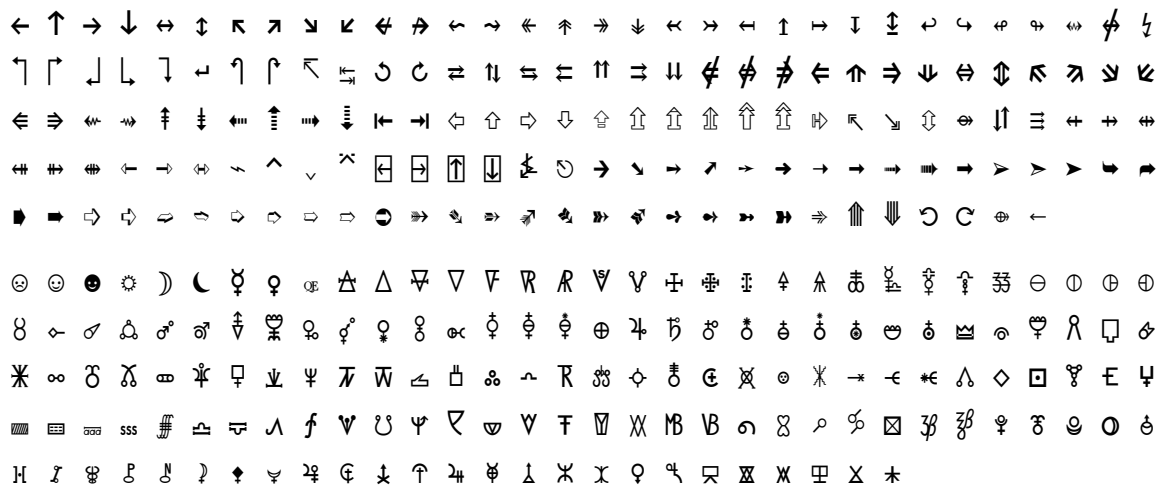
It can be set by the two macros `\Lss{number}{text}` and `\LSS<number>`. The first one has an argument which will be set locally with the given number and the second one works like a switch. It is global to the current group.

<i>no</i>	<i>Default</i>	<i>Alt</i>	
01	g	g	not for italic
02	@	@	
03	Jj	Jj	
04	0	0	
05	*	*	lighter asterisk
06	a	a	not for italic
07	`	`	smaller grave
08	->	→	distinct ligatures
09	f	f	
10	r	r	
11	`	`	thinner grave
12	====	====	joining equals
13	<!--	<!--	HTML comment
14	==	==	double equals
15	<i>ABC...</i>	<i>ABC...</i>	Math Script Roundhand
16	()[]{}	()[]{}	smaller parentheses etc.
17	⋮	⋮	quadrants replace Braille dots
18	<i>ABC...</i>	<i>ABC...</i>	Ball-point pen math script
20	(-)	(-)	splashtidy

4.2.3 Character Variations

It can be set by the two macros `\Lcv{number}{text}` and `\LCV<number>`. The first one has an argument which will be set locally with the given number and the second one works like a switch. It is global to the current group.

<i>no</i>	<i>Default</i>	<i>Var</i>	
01	3	3	
02	7	7	
03	~	~	alternate ASCII tilde
04	l	l	alternate l



References

- [1] Cormullion. *JuliaMono – a monospaced font for scientific and technical computing*. May 3, 2025. URL: <https://juliamono.netlify.app> (visited on 10/13/2025).

6 The font list of JuliaMono

Table 4: JuliaMono-Regular

	0	1	2	3	4	5	6	7	8	9	A	B	C	D	E	F
Basic Latin																
U+0000 - 000F	-	-	-	-	-	-	-	-	-	-	-	-	-	-	-	-
U+0020 - 002F		!	"	#	\$	%	&	'	()	*	+	,	-	.	/
U+0030 - 003F	0	1	2	3	4	5	6	7	8	9	:	;	<	=	>	?
U+0040 - 004F	@	A	B	C	D	E	F	G	H	I	J	K	L	M	N	O
U+0050 - 005F	P	Q	R	S	T	U	V	W	X	Y	Z	[\]	^	_
U+0060 - 006F	`	a	b	c	d	e	f	g	h	i	j	k	l	m	n	o
U+0070 - 007F	p	q	r	s	t	u	v	w	x	y	z	{		}	~	

Table 4: JuliaMono-Regular *cont.*

	0	1	2	3	4	5	6	7	8	9	A	B	C	D	E	F
U+0200 - 020F	À	à	Â	â	È	è	Ê	ê	Ì	ì	Î	î	Ï	ï	Ô	ô
U+0210 - 021F	Ř	ř	Ŕ	ŕ	Ů	ů	Ű	ű	Ş	ş	Ț	ț	Ȑ	ȑ	Ĥ	ĥ
U+0220 - 022F	Ŋ	ŋ	Ɔ	ɔ	Ƶ	ƶ	À	à	Ɛ	ɛ	Ö	ö	Õ	õ	Ó	ó
U+0230 - 023F	Ȫ	ȫ	Ȭ	ȭ	Ȯ	ȯ	Ȱ	ȱ	Ȳ	ȳ	ȴ	ȵ	ȶ	ȷ	ȸ	ȹ
U+0240 - 024F	Ʒ	Ƹ	ƹ	ƺ	ƻ	Ƽ	ƽ	ƾ	ƿ	ƺ	ƻ	Ƽ	ƽ	ƾ	ƿ	ƺ

IPA Extensions

U+0250 - 025F	ɐ	ɑ	ɒ	ɓ	ɔ	ɔ̃	ɔ̄	ɔ̅	ɔ̆	ɔ̇	ɔ̈	ɔ̉	ɔ̊	ɔ̋	ɔ̌	ɔ̍
U+0260 - 026F	ɔ̎	ɔ̏	ɔ̐	ɔ̑	ɔ̒	ɔ̓	ɔ̔	ɔ̕	ɔ̖	ɔ̗	ɔ̘	ɔ̙	ɔ̚	ɔ̛	ɔ̜	ɔ̝
U+0270 - 027F	ɔ̞	ɔ̟	ɔ̠	ɔ̡	ɔ̢	ɔ̣	ɔ̤	ɔ̥	ɔ̦	ɔ̧	ɔ̨	ɔ̩	ɔ̪	ɔ̫	ɔ̬	ɔ̭
U+0280 - 028F	ɔ̮	ɔ̯	ɔ̰	ɔ̱	ɔ̲	ɔ̳	ɔ̴	ɔ̵	ɔ̶	ɔ̷	ɔ̸	ɔ̹	ɔ̺	ɔ̻	ɔ̼	ɔ̽
U+0290 - 029F	ɔ̾	ɔ̿	ɔ̺	ɔ̻	ɔ̼	ɔ̽	ɔ̾	ɔ̿	ɔ̺	ɔ̻	ɔ̼	ɔ̽	ɔ̾	ɔ̿	ɔ̺	ɔ̻
U+02A0 - 02AF	ɔ̿	ɔ̺	ɔ̻	ɔ̼	ɔ̽	ɔ̾	ɔ̿	ɔ̺	ɔ̻	ɔ̼	ɔ̽	ɔ̾	ɔ̿	ɔ̺	ɔ̻	ɔ̼

Spacing Modifier Letters

U+02B0 - 02BF	h	h̃	j	ɹ	ɹ̃	ɹ̄	ɹ̅	ɹ̆	ɹ̇	ɹ̈	ɹ̉	ɹ̊	ɹ̋	ɹ̌	ɹ̍	ɹ̎
U+02C0 - 02CF	ɹ̏	ɹ̐	ɹ̑	ɹ̒	ɹ̓	ɹ̔	ɹ̕	ɹ̖	ɹ̗	ɹ̘	ɹ̙	ɹ̚	ɹ̛	ɹ̜	ɹ̝	ɹ̞
U+02D0 - 02DF	ɹ̟	ɹ̠	ɹ̡	ɹ̢	ɹ̣	ɹ̤	ɹ̥	ɹ̦	ɹ̧	ɹ̨	ɹ̩	ɹ̪	ɹ̫	ɹ̬	ɹ̭	ɹ̮
U+02E0 - 02EF	ɹ̯	ɹ̰	ɹ̱	ɹ̲	ɹ̳	ɹ̴	ɹ̵	ɹ̶	ɹ̷	ɹ̸	ɹ̹	ɹ̺	ɹ̻	ɹ̼	ɹ̽	ɹ̾
U+02F0 - 02FF	ɹ̿	ɹ̺	ɹ̻	ɹ̼	ɹ̽	ɹ̾	ɹ̿	ɹ̺	ɹ̻	ɹ̼	ɹ̽	ɹ̾	ɹ̿	ɹ̺	ɹ̻	ɹ̼

Combining Diacritical Marks

U+0300 - 030F	ˆ	ˆ̃	ˆ̄	ˆ̅	ˆ̆	ˆ̇	ˆ̈	ˆ̉	ˆ̊	ˆ̋	ˆ̌	ˆ̍	ˆ̎	ˆ̏	ˆ̐	ˆ̑
U+0310 - 031F	ˆ̒	ˆ̓	ˆ̔	ˆ̕	ˆ̖	ˆ̗	ˆ̘	ˆ̙	ˆ̚	ˆ̛	ˆ̜	ˆ̝	ˆ̞	ˆ̟	ˆ̠	ˆ̡
U+0320 - 032F	ˆ̢	ˆ̣	ˆ̤	ˆ̥	ˆ̦	ˆ̧	ˆ̨	ˆ̩	ˆ̪	ˆ̫	ˆ̬	ˆ̭	ˆ̮	ˆ̯	ˆ̰	ˆ̱
U+0330 - 033F	ˆ̲	ˆ̳	ˆ̴	ˆ̵	ˆ̶	ˆ̷	ˆ̸	ˆ̹	ˆ̺	ˆ̻	ˆ̼	ˆ̽	ˆ̾	ˆ̿	ˆ̺	ˆ̻
U+0340 - 034F	ˆ̼	ˆ̽	ˆ̾	ˆ̿	ˆ̺	ˆ̻	ˆ̼	ˆ̽	ˆ̾	ˆ̿	ˆ̺	ˆ̻	ˆ̼	ˆ̽	ˆ̾	ˆ̿
U+0350 - 035F	ˆ̺	ˆ̻	ˆ̼	ˆ̽	ˆ̾	ˆ̿	ˆ̺	ˆ̻	ˆ̼	ˆ̽	ˆ̾	ˆ̿	ˆ̺	ˆ̻	ˆ̼	ˆ̽

Table 4: JuliaMono-Regular *cont.*

	0	1	2	3	4	5	6	7	8	9	A	B	C	D	E	F
U+0360-036F	˜	˘	˙	˚	˛	˜	˚	˛	˚	˛	˚	˛	˚	˛	˚	˛
Greek and Coptic																
U+0370-037F	Ι	Ι	Τ	Τ	΄	΄	И	И	-	-	Ϛ	Ϛ	Ϛ	;	;	;
U+0380-038F	-	-	-	-	΄	΄	Α	•	Ε	Η	Ι	-	Ο	-	Υ	Ω
U+0390-039F	ι	Α	Β	Γ	Δ	Ε	Ζ	Η	Θ	Ι	Κ	Λ	Μ	Ν	Ξ	Ο
U+03A0-03AF	Π	Ρ	-	Σ	Τ	Υ	Φ	Χ	Ψ	Ω	Ϊ	Ϋ	ά	έ	ή	ί
U+03B0-03BF	Ϝ	α	β	γ	δ	ε	ζ	η	θ	ι	κ	λ	μ	ν	ξ	ο
U+03C0-03CF	π	ρ	ς	σ	τ	υ	φ	χ	ψ	ω	ϊ	ϋ	ό	ύ	ώ	ϙ
U+03D0-03DF	Ϡ	ϡ	Ϣ	ϣ	Ϥ	ϥ	Ϧ	ϧ	Ϩ	ϩ	Ϫ	ϫ	Ϭ	ϭ	Ϯ	ϯ
U+03E0-03EF	ϰ	ϱ	ϲ	ϳ	ϴ	ϵ	϶	Ϸ	ϸ	Ϲ	Ϻ	ϻ	ϼ	Ͻ	Ͼ	Ͽ
U+03F0-03FF	Ϡ	ϡ	Ϣ	ϣ	Ϥ	ϥ	Ϧ	ϧ	Ϩ	ϩ	Ϫ	ϫ	Ϭ	ϭ	Ϯ	ϯ
Cyrillic																
U+0400-040F	Ё	Ё	Ђ	Ѓ	Є	Ѕ	І	Ї	Ј	Љ	Њ	Ћ	Ќ	Ў	Ѓ	Ѕ
U+0410-041F	А	Б	В	Г	Д	Е	Ж	З	И	Й	К	Л	М	Н	О	П
U+0420-042F	Р	С	Т	У	Ф	Х	Ц	Ч	Ш	Щ	Ъ	Ы	Ь	Э	Ю	Я
U+0430-043F	а	б	в	г	д	е	ж	з	и	й	к	л	м	н	о	п
U+0440-044F	р	с	т	у	ф	х	ц	ч	ш	щ	ъ	ы	ь	э	ю	я
U+0450-045F	ё	ё	ђ	ѓ	є	ѕ	і	ї	ј	љ	њ	ћ	ќ	ў	џ	џ
U+0460-046F	Ѡ	ѡ	Ѣ	ѣ	Ѥ	ѥ	Ѧ	ѧ	Ѩ	ѩ	Ѫ	ѫ	Ѭ	ѭ	Ѯ	ѯ
U+0470-047F	Ѱ	ѱ	Ѳ	ѳ	Ѵ	ѵ	Ѷ	ѷ	Ѹ	ѹ	Ѻ	ѻ	Ѽ	ѽ	Ѿ	ѿ
U+0480-048F	Ѡ	ѡ	Ѣ	ѣ	Ѥ	ѥ	Ѧ	ѧ	Ѩ	ѩ	Ѫ	ѫ	Ѭ	ѭ	Ѯ	ѯ
U+0490-049F	Ґ	ґ	Ғ	ғ	Ҕ	ҕ	Җ	җ	Ҙ	ҙ	Ҡ	қ	қ	қ	қ	қ
U+04A0-04AF	Ҡ	қ	Ң	ң	Ҥ	ҥ	Ҧ	ҧ	Ҩ	ҩ	Ҫ	ҫ	Ҭ	ҭ	Ү	ү
U+04B0-04BF	Ү	ү	Ҫ	ҫ	Ҭ	ҭ	Ү	ү	Ҫ	ҫ	Ҭ	ҭ	Ү	ү	Ҫ	ҫ
U+04C0-04CF	І	Ж	ж	К	к	Л	л	Н	н	Н	н	Ч	ч	М	м	І
U+04D0-04DF	Ӑ	ӑ	Ӓ	ӓ	Ӕ	ӕ	Ӗ	ӗ	Ә	ә	Ӛ	ӛ	Ӝ	ӝ	Ӟ	ӟ

Table 4: JuliaMono-Regular *cont.*

	0	1	2	3	4	5	6	7	8	9	A	B	C	D	E	F
U+04E0 - 04EF	З	з	Й	й	Ї	ї	Ӧ	ӧ	Ө	ө	Ӗ	ӗ	Э	э	Ү	ү
U+04F0 - 04FF	Ӹ	ӹ	Ӻ	ӻ	Ӽ	ӽ	Ӿ	ӿ	Ӽ	ӽ	Ӿ	ӿ	Ӽ	ӽ	Ӿ	ӿ
U+0500 - 050F	Ԁ	ԁ	Ԃ	ԃ	Ԅ	ԅ	Ԇ	ԇ	Ԉ	ԉ	Ԋ	ԋ	Ԍ	ԍ	Ԏ	ԏ
U+0510 - 051F	Ԑ	ԑ	Ԓ	ԓ	Ԕ	ԕ	Ԗ	ԗ	Ԙ	ԙ	Ԛ	ԛ	Ԝ	ԝ	Ԟ	ԟ
U+0520 - 052F	Ԡ	ԡ	Ԣ	ԣ	Ԥ	ԥ	Ԧ	ԧ	Ԩ	ԩ	Ԫ	ԫ	Ԭ	ԭ	Ԯ	ԯ

Armenian

U+0530-053F	-	Ա	Բ	Գ	Դ	Ե	Զ	Է	Ը	Թ	Ժ	Ի	Լ	Խ	Ծ	Կ
U+0540-054F	Հ	Ձ	Ղ	Ճ	Մ	Յ	Ն	Շ	Ո	Չ	Պ	Ջ	Ռ	Ս	Վ	Տ
U+0550-055F	Ր	Ց	Ի	Փ	Ք	Օ	Ֆ	-	-	՝	՛	՛	՛	՛	՛	՛
U+0560-056F	Փ	Մ	Բ	Գ	Դ	Ե	Զ	Է	Ը	Թ	Ժ	Ի	Լ	Խ	Ծ	Կ
U+0570-057F	Հ	Ձ	Ղ	Ճ	Մ	Յ	Ն	Շ	Ո	Չ	Պ	Ջ	Ռ	Ս	Վ	Տ
U+0580-058F	Ր	Ց	Ի	Փ	Ք	Օ	Ֆ	Է	Ը	:	-	-	-	-	-	-

Hebrew

U+0590 - 059F	א	ב	ג	ד	ה	ו	ז	ח	ט	י	כ	ל	מ	נ	ס
U+05A0 - 05AF	ע	פ	צ	ק	ר	ש	ת	-	-	-	-	-	-	-	ם
U+05B0 - 05BF	נ	ס	ע	פ	צ	ק	ר	ש	ת	-	-	-	-	-	ם
U+05C0 - 05CF	א	ב	ג	ד	ה	ו	ז	ח	ט	י	כ	ל	מ	נ	ס
U+05D0 - 05DF	א	ב	ג	ד	ה	ו	ז	ח	ט	י	כ	ל	מ	נ	ס
U+05E0 - 05EF	א	ב	ג	ד	ה	ו	ז	ח	ט	י	כ	ל	מ	נ	ס
U+05F0 - 05FF	א	ב	ג	ד	ה	ו	ז	ח	ט	י	כ	ל	מ	נ	ס

Arabic

U+0600 - 060F	ا ب ت ث ج ح خ د
U+0610 - 061F	- - - - - ه و ز س ش ط ظ ع غ ف ق ك ل م ن و ي
U+0620 - 062F	ي ع ا آ أ ؤ إ ئ ا ب ة ت ث ج ح خ د
U+0630 - 063F	ذ ر ز س ش ص ض ط ظ ع غ - - - -
U+0640 - 064F	- ف ق ك ل م ن و ي ء أ ؤ إ

Table 4: JuliaMono-Regular *cont.*

	0	1	2	3	4	5	6	7	8	9	A	B	C	D	E	F
U+0650-065F	˘	˘	˘	˘	˘	˘	˘	˘	˘	˘	˘	˘	˘	˘	˘	˘
U+0660-066F	•	ı	پ	س	ع	و	ل	ف	ق	ك	ح	ج	ب	ا	ت	ث
U+0670-067F	˙	İ	-	-	-	-	-	-	-	˙	-	-	-	-	پ	-
U+0680-068F	-	-	-	-	-	-	ح	-	ج	-	-	-	-	-	-	-
U+0690-069F	ج	د	-	-	-	-	-	-	د	-	-	-	-	-	-	-
U+06A0-06AF	-	و	-	-	و	-	-	-	-	و	-	-	-	-	-	و
U+06B0-06BF	-	-	-	-	-	-	-	-	-	-	و	و	-	-	و	-
U+06C0-06CF	-	و	و	و	-	-	و	-	-	-	-	-	و	-	و	-
U+06D0-06DF	-	-	و	و	•	و	-	-	-	-	-	-	-	و	و	-
U+06E0-06EF	•	ı	پ	س	پ	و	و	ف	ق	-	-	-	-	-	-	-
Syriac																
U+0700-070F	✠	-	-	-	-	-	-	-	-	-	-	-	-	✠	-	-
NKo																
U+07F0-07FF	-	-	-	-	-	-	-	•	-	-	-	-	-	-	-	-
Devanagari																
U+0960-096F	-	-	-	-	-	-	०	१	२	३	४	५	६	७	८	९
Bengali																
U+09E0-09EF	-	-	-	-	-	-	০	১	২	৩	৪	৫	৬	৭	৮	৯
Tamil																
U+0B80-0B8F	-	-	-	ஃ	-	-	-	-	-	-	-	-	-	-	-	-
Thai																
U+0E30-0E3F	-	-	-	-	-	-	-	-	-	-	-	-	-	-	-	฿
Tibetan																
U+0FC0-0FCF	-	-	-	-	-	-	-	-	-	-	༠	༡	༢	-	-	-

Table 4: JuliaMono-Regular *cont.*[illegible]

Table 4: JuliaMono-Regular *cont.*

	0	1	2	3	4	5	6	7	8	9	A	B	C	D	E	F
U+1D70–1D7F	𐒀	𐒁	𐒂	𐒃	𐒄	𐒅	𐒆	𐒇	𐒈	𐒉	𐒊	𐒋	𐒌	𐒍	𐒎	𐒏

Phonetic Extensions Supplement

U+1D80–1D8F	𐒐	𐒑	𐒒	𐒓	𐒔	𐒕	𐒖	𐒗	𐒘	𐒙	𐒚	𐒛	𐒜	𐒝	𐒞	𐒟
U+1D90–1D9F	𐒠	𐒡	𐒢	𐒣	𐒤	𐒥	𐒦	𐒧	𐒨	𐒩	𐒪	𐒫	𐒬	𐒭	𐒮	𐒯
U+1DA0–1DAF	𐒰	𐒱	𐒲	𐒳	𐒴	𐒵	𐒶	𐒷	𐒸	𐒹	𐒺	𐒻	𐒼	𐒽	𐒾	𐒿
U+1DB0–1DBF	𐒀	𐒁	𐒂	𐒃	𐒄	𐒅	𐒆	𐒇	𐒈	𐒉	𐒊	𐒋	𐒌	𐒍	𐒎	𐒏

Combining Diacritical Marks Supplement

U+1DC0–1DCF	◌̸	◌̹	◌̺	◌̻	◌̼	◌̽	◌̾	◌̿	◌̿	◌̿	◌̿	◌̿	◌̿	◌̿	◌̿	◌̿
U+1DD0–1DDF	◌̿	◌̿	◌̿	◌̿	◌̿	◌̿	◌̿	◌̿	◌̿	◌̿	◌̿	◌̿	◌̿	◌̿	◌̿	◌̿
U+1DE0–1DEF	◌̿	◌̿	◌̿	◌̿	◌̿	◌̿	◌̿	◌̿	◌̿	◌̿	◌̿	◌̿	◌̿	◌̿	◌̿	◌̿
U+1DF0–1DFF	◌̿	◌̿	◌̿	◌̿	◌̿	◌̿	◌̿	◌̿	◌̿	◌̿	◌̿	◌̿	◌̿	◌̿	◌̿	◌̿

Latin Extended Additional

U+1E00–1E0F	À	á	Â	â	Ã	ã	Ä	ä	Å	å	Æ	æ	Ç	ç	Ð	ð
U+1E10–1E1F	Ñ	ñ	Ȧ	ȧ	È	è	É	é	Ê	ê	Ë	ë	Ě	ě	Ė	ė
U+1E20–1E2F	Ġ	ġ	Ĥ	ĥ	Ħ	ħ	İ	ı	Ĳ	ĳ	Ĵ	ĵ	Ķ	ķ	Ĺ	ĺ
U+1E30–1E3F	Ł	ł	Ł	ł	Ł	ł	Ł	ł	Ł	ł	Ł	ł	Ł	ł	Ł	ł
U+1E40–1E4F	Œ	œ	Œ	œ	Œ	œ	Œ	œ	Œ	œ	Œ	œ	Œ	œ	Œ	œ
U+1E50–1E5F	Œ	œ	Œ	œ	Œ	œ	Œ	œ	Œ	œ	Œ	œ	Œ	œ	Œ	œ
U+1E60–1E6F	Š	š	Š	š	Š	š	Š	š	Š	š	Š	š	Š	š	Š	š
U+1E70–1E7F	Ť	ť	Ť	ť	Ť	ť	Ť	ť	Ť	ť	Ť	ť	Ť	ť	Ť	ť
U+1E80–1E8F	Ŧ	ŧ	Ŧ	ŧ	Ŧ	ŧ	Ŧ	ŧ	Ŧ	ŧ	Ŧ	ŧ	Ŧ	ŧ	Ŧ	ŧ
U+1E90–1E9F	Ž	ž	Ž	ž	Ž	ž	Ž	ž	Ž	ž	Ž	ž	Ž	ž	Ž	ž
U+1EA0–1EAF	À	á	Â	â	Ã	ã	Ä	ä	Å	å	Æ	æ	Ç	ç	Ð	ð
U+1EB0–1EBF	Ñ	ñ	Ȧ	ȧ	È	è	É	é	Ê	ê	Ë	ë	Ě	ě	Ė	ė

Table 4: JuliaMono-Regular *cont.*

	0	1	2	3	4	5	6	7	8	9	A	B	C	D	E	F
U+2040 - 204F	ˆ	ˆ	ˆ	ˆ	ˆ	[]	??	??	??	ˆ	ˆ	ˆ	ˆ	ˆ	ˆ
U+2050 - 205F	ˆ	ˆ	ˆ	ˆ	ˆ	ˆ	ˆ	ˆ	ˆ	ˆ	ˆ	ˆ	ˆ	ˆ	ˆ	ˆ
U+2060 - 206F																

Superscripts and Subscripts

U+2070 - 207F	0	i	-	-	4	5	6	7	8	9	+	-	=	()	n
U+2080 - 208F	0	1	2	3	4	5	6	7	8	9	+	-	=	()	-
U+2090 - 209F	a	e	o	x	e	h	k	l	m	n	p	s	t	-	-	-

Currency Symbols

U+20A0 - 20AF	€	¢	£	¥	₹	₱	₨	₪	₴	₵	₶	₷	₸	₹	₺	₻
U+20B0 - 20BF	₼	₾	₿	₽	₾	₿	₽	₾	₿	₽	₾	₿	₽	₾	₿	₽

Combining Diacritical Marks for Symbols

U+20D0 - 20DF	◌	◌	◌	◌	◌	◌	◌	◌	◌	◌	◌	◌	◌	◌	◌	◌
U+20E0 - 20EF	◌	◌	◌	◌	◌	◌	◌	◌	◌	◌	◌	◌	◌	◌	◌	◌
U+20F0 - 20FF	*	-	-	-	-	-	-	-	-	-	-	-	-	-	-	-

Letterlike Symbols

U+2100 - 210F	ℳ	ℒ	℔	ℕ	℥	ℱ	ℊ	ℋ	ℌ	ℍ	ℎ	ℏ	ℐ	ℑ	ℒ	℔
U+2110 - 211F	ℓ	ℓ	ℓ	ℓ	ℓ	ℓ	ℓ	ℓ	ℓ	ℓ	ℓ	ℓ	ℓ	ℓ	ℓ	ℓ
U+2120 - 212F	ℓ	ℓ	ℓ	ℓ	ℓ	ℓ	ℓ	ℓ	ℓ	ℓ	ℓ	ℓ	ℓ	ℓ	ℓ	ℓ
U+2130 - 213F	ℓ	ℓ	ℓ	ℓ	ℓ	ℓ	ℓ	ℓ	ℓ	ℓ	ℓ	ℓ	ℓ	ℓ	ℓ	ℓ
U+2140 - 214F	ℓ	ℓ	ℓ	ℓ	ℓ	ℓ	ℓ	ℓ	ℓ	ℓ	ℓ	ℓ	ℓ	ℓ	ℓ	ℓ

Number Forms

U+2150 - 215F	⅓	⅓	⅓	⅓	⅓	⅓	⅓	⅓	⅓	⅓	⅓	⅓	⅓	⅓	⅓	⅓
U+2160 - 216F	I	II	III	IV	V	VI	VII	VIII	IX	X	XI	XII	L	C	D	M
U+2170 - 217F	i	ii	iii	iv	v	vi	vii	viii	ix	x	xi	xii	l	c	d	m

Table 4: JuliaMono-Regular *cont.*

	0	1	2	3	4	5	6	7	8	9	A	B	C	D	E	F
Miscellaneous Technical																
U+2300 - 230F	∅	↵	⏏	^	∇	↗	↖	}	⌈	⌋	⌌	⌍	⌎	⌏	⌐	⌑
U+2310 - 231F	⌒	⌓	⌔	⌕	⌖	⌗	⌘	⌙	⌚	⌛	⌜	⌝	⌞	⌟	⌠	⌡
U+2320 - 232F	∫	⌢	⌣	⌤	⌥	⌦	⌧	⌨	〈	〉	⌫	⌬	⌭	⌮	⌯	⌰
U+2330 - 233F	⌱	⌲	⌳	⌴	⌵	⌶	⌷	⌸	⌹	⌺	⌻	⌼	⌽	⌾	⌿	⌿
U+2340 - 234F	⌿	⌿	⌿	⌿	⌿	⌿	⌿	⌿	⌿	⌿	⌿	⌿	⌿	⌿	⌿	⌿
U+2350 - 235F	⌿	⌿	⌿	⌿	⌿	⌿	⌿	⌿	⌿	⌿	⌿	⌿	⌿	⌿	⌿	⌿
U+2360 - 236F	⌿	⌿	⌿	⌿	⌿	⌿	⌿	⌿	⌿	⌿	⌿	⌿	⌿	⌿	⌿	⌿
U+2370 - 237F	⌿	⌿	⌿	⌿	⌿	⌿	⌿	⌿	⌿	⌿	⌿	⌿	⌿	⌿	⌿	⌿
U+2380 - 238F	⌿	⌿	⌿	⌿	⌿	⌿	⌿	⌿	⌿	⌿	⌿	⌿	⌿	⌿	⌿	⌿
U+2390 - 239F	⌿	⌿	⌿	⌿	⌿	⌿	⌿	⌿	⌿	⌿	⌿	⌿	⌿	⌿	⌿	⌿
U+23A0 - 23AF	⌿	⌿	⌿	⌿	⌿	⌿	⌿	⌿	⌿	⌿	⌿	⌿	⌿	⌿	⌿	⌿
U+23B0 - 23BF	⌿	⌿	⌿	⌿	⌿	⌿	⌿	⌿	⌿	⌿	⌿	⌿	⌿	⌿	⌿	⌿
U+23C0 - 23CF	⌿	⌿	⌿	⌿	⌿	⌿	⌿	⌿	⌿	⌿	⌿	⌿	⌿	⌿	⌿	⌿
U+23D0 - 23DF	⌿	⌿	⌿	⌿	⌿	⌿	⌿	⌿	⌿	⌿	⌿	⌿	⌿	⌿	⌿	⌿
U+23E0 - 23EF	⌿	⌿	⌿	⌿	⌿	⌿	⌿	⌿	⌿	⌿	⌿	⌿	⌿	⌿	⌿	⌿
U+23F0 - 23FF	⌿	⌿	⌿	⌿	⌿	⌿	⌿	⌿	⌿	⌿	⌿	⌿	⌿	⌿	⌿	⌿
Control Pictures																
U+2400 - 240F	N _{UL}	S _{OH}	S _{TX}	E _{TX}	E _{OT}	E _{NQ}	A _{CK}	B _{EL}	B _S	H _T	L _F	V _T	F _F	C _R	S _O	S _I
U+2410 - 241F	D _{LE}	D _{C1}	D _{C2}	D _{C3}	D _{C4}	N _{AK}	S _{YN}	E _{TB}	C _{AN}	E _M	S _{UB}	E _{SC}	F _S	G _S	R _S	U _S
U+2420 - 242F	S _P	D _{EL}	b	⌿	N _L	⌿	⌿	⌿	⌿	⌿	⌿	⌿	⌿	⌿	⌿	⌿
Optical Character Recognition																
U+2440 - 244F	⌿	⌿	⌿	⌿	⌿	⌿	⌿	⌿	⌿	⌿	⌿	⌿	⌿	⌿	⌿	⌿
Enclosed Alphanumerics																
U+2460 - 246F	①	②	③	④	⑤	⑥	⑦	⑧	⑨	⑩	⑪	⑫	⑬	⑭	⑮	⑯

Table 4: JuliaMono-Regular *cont.*

	0	1	2	3	4	5	6	7	8	9	A	B	C	D	E	F
U+2740-274F	☼	☼	☼	☼	☼	☼	☼	☼	☼	☼	☼	☼	☼	☼	☼	☼
U+2750-275F	☼	☼	☼	?	?	!	❖	!				‘	’	“	”	,
U+2760-276F	„	„	„	♥	♥	♥	♥	♥	()	()	()	<	>
U+2770-277F	{	}	{	}	{	}	①	②	③	④	⑤	⑥	⑦	⑧	⑨	⑩
U+2780-278F	①	②	③	④	⑤	⑥	⑦	⑧	⑨	⑩	①	②	③	④	⑤	⑥
U+2790-279F	⑦	⑧	⑨	⑩	➔	+	-	÷	↘	➔	↗	➔	➔	➔	➔	➔
U+27A0-27AF	➔	➔	➔	➔	➔	➔	➔	➔	➔	➔	➔	➔	➔	➔	➔	➔
U+27B0-27BF	↺	↺	↺	↺	↺	↺	↺	↺	↺	↺	↺	↺	↺	↺	↺	↺

Miscellaneous Mathematical Symbols-A

U+27C0-27CF	⌞	⌞	⌞	⌞	⌞	⌞	⌞	⌞	⌞	⌞	⌞	⌞	⌞	⌞	⌞	⌞
U+27D0-27DF	⋄	⋄	⋄	⋄	⋄	⋄	⋄	⋄	⋄	⋄	⋄	⋄	⋄	⋄	⋄	⋄
U+27E0-27EF	⋄	⋄	⋄	⋄	⋄	⋄	⋄	⋄	⋄	⋄	⋄	⋄	⋄	⋄	⋄	⋄

Supplemental Arrows-A

U+27F0-27FF	↗	↘	↙	↘	↙	↘	↙	↘	↙	↘	↙	↘	↙	↘	↙	↘
-------------	---	---	---	---	---	---	---	---	---	---	---	---	---	---	---	---

Braille Patterns

U+2800-280F	⠠	⠡	⠢	⠣	⠤	⠥	⠦	⠧	⠨	⠩	⠪	⠫	⠬	⠭	⠮	⠯
U+2810-281F	⠰	⠱	⠲	⠳	⠴	⠵	⠶	⠷	⠸	⠹	⠺	⠻	⠼	⠽	⠾	⠿
U+2820-282F	⠠	⠡	⠢	⠣	⠤	⠥	⠦	⠧	⠨	⠩	⠪	⠫	⠬	⠭	⠮	⠯
U+2830-283F	⠰	⠱	⠲	⠳	⠴	⠵	⠶	⠷	⠸	⠹	⠺	⠻	⠼	⠽	⠾	⠿
U+2840-284F	⠠	⠡	⠢	⠣	⠤	⠥	⠦	⠧	⠨	⠩	⠪	⠫	⠬	⠭	⠮	⠯
U+2850-285F	⠰	⠱	⠲	⠳	⠴	⠵	⠶	⠷	⠸	⠹	⠺	⠻	⠼	⠽	⠾	⠿
U+2860-286F	⠠	⠡	⠢	⠣	⠤	⠥	⠦	⠧	⠨	⠩	⠪	⠫	⠬	⠭	⠮	⠯
U+2870-287F	⠰	⠱	⠲	⠳	⠴	⠵	⠶	⠷	⠸	⠹	⠺	⠻	⠼	⠽	⠾	⠿
U+2880-288F	⠠	⠡	⠢	⠣	⠤	⠥	⠦	⠧	⠨	⠩	⠪	⠫	⠬	⠭	⠮	⠯
U+2890-289F	⠰	⠱	⠲	⠳	⠴	⠵	⠶	⠷	⠸	⠹	⠺	⠻	⠼	⠽	⠾	⠿
U+28A0-28AF	⠠	⠡	⠢	⠣	⠤	⠥	⠦	⠧	⠨	⠩	⠪	⠫	⠬	⠭	⠮	⠯

Table 4: JuliaMono-Regular *cont.*

	0	1	2	3	4	5	6	7	8	9	A	B	C	D	E	F
U+2880 - 28BF	⠠	⠡	⠢	⠣	⠤	⠥	⠦	⠧	⠨	⠩	⠪	⠫	⠬	⠭	⠮	⠯
U+28C0 - 28CF	⠰	⠱	⠲	⠳	⠴	⠵	⠶	⠷	⠸	⠹	⠺	⠻	⠼	⠽	⠾	⠿
U+28D0 - 28DF	⠠	⠡	⠢	⠣	⠤	⠥	⠦	⠧	⠨	⠩	⠪	⠫	⠬	⠭	⠮	⠯
U+28E0 - 28EF	⠰	⠱	⠲	⠳	⠴	⠵	⠶	⠷	⠸	⠹	⠺	⠻	⠼	⠽	⠾	⠿
U+28F0 - 28FF	⠠	⠡	⠢	⠣	⠤	⠥	⠦	⠧	⠨	⠩	⠪	⠫	⠬	⠭	⠮	⠯

Supplemental Arrows-B

[illegible]

Miscellaneous Mathematical Symbols-B

U+2980 - 298F	⋮	●	⊙	⌋	⌌	⌒	⌓	⌔	⌕	⌖	⌗	⌘	⌙	⌚	⌛	⌜	⌝
U+2990 - 299F	⌞	⌟	⌠	⌡	⌢	⌣	⌤	⌥	⌦	⋮	⋷	⌞	⌟	⌠	⌡	⌢	⌣
U+29A0 - 29AF	⌤	⌥	⌦	⌧	⌨	〈	〉	⌫	⌬	⌭	⌮	⌯	⌰	⌱	⌲	⌳	⌴
U+29B0 - 29BF	⊖	⊗	⊘	⊙	⊚	⊛	⊜	⊝	⊞	⊟	⊠	⊡	⊢	⊣	⊤	⊥	⊦
U+29C0 - 29CF	⊧	⊨	⊩	⊪	⊫	⊬	⊭	⊮	⊯	⊰	⊱	⊲	⊳	⊴	⊵	⊶	⊷
U+29D0 - 29DF	⊸	⊹	⊺	⊻	⊼	⊽	⊾	⊿	⋈	⋉	⋊	⋋	⋌	⋍	⋎	⋏	⋐
U+29E0 - 29EF	◻	◼	◽	≠	≠	≠	≠	≠	≠	♠	♠	♠	♠	♠	♠	♠	♠
U+29F0 - 29FF	◊	◆	◊	◆	→	↖	↗	↘	↙	↘	↙	↘	↙	↘	↙	↘	↙

Supplemental Mathematical Operators

U+2A00-2A0F                

U+2A10-2A1F                

Table 4: JuliaMono-Regular *cont.*

	0	1	2	3	4	5	6	7	8	9	A	B	C	D	E	F
U+2A20 - 2A2F	➤	⤴	⤵	⤶	⤷	⤸	⤹	⤺	⤻	⤼	⤽	⤾	⤿	⥀	⥁	⥂
U+2A30 - 2A3F	✕	✖	✗	✙	✚	✛	✜	✝	✞	✟	✠	✡	✢	✣	✤	✥
U+2A40 - 2A4F	Ⓐ	Ⓑ	Ⓒ	Ⓓ	Ⓔ	Ⓕ	Ⓖ	Ⓗ	Ⓘ	Ⓚ	Ⓛ	Ⓜ	Ⓤ	Ⓟ	Ⓠ	Ⓡ
U+2A50 - 2A5F	Ⓔ	Ⓕ	Ⓖ	Ⓗ	Ⓘ	Ⓚ	Ⓛ	Ⓜ	Ⓤ	Ⓟ	Ⓠ	Ⓡ	Ⓢ	Ⓣ	Ⓤ	Ⓥ
U+2A60 - 2A6F	⚭	⚮	⚯	⚰	⚱	⚲	⚳	⚴	⚵	⚶	⚷	⚸	⚹	⚺	⚻	⚼
U+2A70 - 2A7F	⚽	⚾	⚿	⣀	⣁	⣂	⣃	⣄	⣅	⣆	⣇	⣈	⣉	⣊	⣋	⣌
U+2A80 - 2A8F	⣍	⣎	⣏	⣐	⣑	⣒	⣓	⣔	⣕	⣖	⣗	⣘	⣙	⣚	⣛	⣜
U+2A90 - 2A9F	⣝	⣞	⣟	⣠	⣡	⣢	⣣	⣤	⣥	⣦	⣧	⣨	⣩	⣪	⣫	⣬
U+2AA0 - 2AAF	⣭	⣮	⣯	⣰	⣱	⣲	⣳	⣴	⣵	⣶	⣷	⣸	⣹	⣺	⣻	⣼
U+2AB0 - 2ABF	⣽	⣾	⣿	⤀	⤁	⤂	⤃	⤄	⤅	⤆	⤇	⤈	⤉	⤊	⤋	⤌
U+2AC0 - 2ACF	⤍	⤎	⤏	⤐	⤑	⤒	⤓	⤔	⤕	⤖	⤗	⤘	⤙	⤚	⤛	⤜
U+2AD0 - 2ADF	⤞	⤟	⤠	⤡	⤢	⤣	⤤	⤥	⤦	⤧	⤨	⤩	⤪	⤫	⤬	⤭
U+2AE0 - 2AEF	⤯	⤰	⤱	⤲	⤳	⤴	⤵	⤶	⤷	⤸	⤹	⥀	⥁	⥂	⥃	⥄
U+2AF0 - 2AFF	⥆	⥇	⥈	⥉	⥊	⥋	⥌	⥍	⥎	⥏	⥐	⥑	⥒	⥓	⥔	⥕

Miscellaneous Symbols and Arrows

[illegible]

Table 4: JuliaMono-Regular *cont.*

	0	1	2	3	4	5	6	7	8	9	A	B	C	D	E	F
U+2BD0-2BDF	⌘	⌚	⌛	⌜	⌝	⌞	⌟	⌠	⌡	⌢	⌣	⌤	⌥	⌦	⌧	⌨
U+2BE0-2BEF	〈	〉	⌫	⌬	⌭	⌮	⌯	⌰	⌱	⌲	⌳	⌴	⌵	⌶	⌷	⌸
U+2BF0-2BFF	⌹	⌺	⌻	⌼	⌽	⌾	⌿	Ⓚ	Ⓛ	Ⓜ	Ⓨ	Ⓩ	ⓐ	ⓑ	ⓓ	ⓔ

Latin Extended-C

U+2C60-2C6F	Ł	ł	Ł	Ŗ	ŗ	Ŗ	Ź	ź	Ź	ž	ž	α	Μ	ν		
U+2C70-2C7F	ρ	ρ	Ŵ	ŵ	ŷ	ƚ	ƚ	ø	ø	ı	ı	Ƶ	ƶ	Ʒ	Ʒ	Ʒ

Coptic

U+2CA0-2CAF	-	-	-	-	-	-	-	-	-	-	-	-	-	-	-	Ψ
U+2CB0-2CBF	-	-	Ⲁ	ⲁ	-	-	-	-	-	-	-	-	-	-	-	-
U+2CD0-2CDF	-	-	-	-	-	-	-	-	-	-	-	-	-	-	-	Ⲛ

Georgian Supplement

U+2D00-2D0F	Ⴀ	Ⴁ	Ⴂ	Ⴃ	Ⴄ	Ⴅ	Ⴆ	Ⴇ	Ⴈ	Ⴉ	Ⴊ	Ⴋ	Ⴌ	Ⴍ	Ⴎ	Ⴏ
U+2D10-2D1F	Ⴐ	Ⴑ	Ⴒ	Ⴓ	Ⴔ	Ⴕ	Ⴖ	Ⴗ	Ⴘ	Ⴙ	Ⴚ	Ⴛ	Ⴜ	Ⴝ	Ⴞ	Ⴟ
U+2D20-2D2F	Ⴚ	Ⴛ	Ⴜ	Ⴝ	Ⴞ	Ⴟ	Ⴚ	Ⴛ	Ⴜ	Ⴝ	Ⴞ	Ⴟ	Ⴚ	Ⴛ	Ⴜ	Ⴝ

Tifinagh

U+2D30-2D3F	ⵜ	ⵉ	ⵏ	ⵝ	ⵏ	ⵏ	ⵏ	ⵏ	ⵏ	ⵏ	ⵏ	ⵏ	ⵏ	ⵏ	ⵏ	ⵏ
U+2D40-2D4F	ⵏ	ⵏ	ⵏ	ⵏ	ⵏ	ⵏ	ⵏ	ⵏ	ⵏ	ⵏ	ⵏ	ⵏ	ⵏ	ⵏ	ⵏ	ⵏ
U+2D50-2D5F	ⵏ	ⵏ	ⵏ	ⵏ	ⵏ	ⵏ	ⵏ	ⵏ	ⵏ	ⵏ	ⵏ	ⵏ	ⵏ	ⵏ	ⵏ	ⵏ
U+2D60-2D6F	ⵏ	ⵏ	ⵏ	ⵏ	ⵏ	ⵏ	ⵏ	ⵏ	ⵏ	ⵏ	ⵏ	ⵏ	ⵏ	ⵏ	ⵏ	ⵏ
U+2D70-2D7F	ⵏ	-	-	-	-	-	-	-	-	-	-	-	-	-	-

Ethiopic Extended

U+2DE0-2DEF	ᐁ	ᐂ	ᐃ	ᐄ	ᐅ	ᐆ	ᐇ	ᐈ	ᐉ	ᐊ	ᐋ	ᐌ	ᐍ	ᐎ	ᐏ	ᐐ
U+2DF0-2DFF	ᐑ	ᐒ	ᐓ	ᐔ	ᐕ	ᐖ	ᐗ	ᐘ	ᐙ	ᐚ	ᐛ	ᐜ	ᐝ	ᐞ	ᐟ	ᐠ

Table 4: JuliaMono-Regular *cont.*

	0	1	2	3	4	5	6	7	8	9	A	B	C	D	E	F
Supplemental Punctuation																
U+2E00 - 2E0F	␣	␤	␥	␦	␧	␨	␩	␪	␫	␬	␭	␮	␯	␰	␱	␲
U+2E10 - 2E1F	␳	␴	␵	␶	␷	␸	␹	␺	␻	␼	␽	␾	␿	␿	␿	␿
U+2E20 - 2E2F	␿	␿	␿	␿	␿	␿	␿	␿	␿	␿	␿	␿	␿	␿	␿	␿
U+2E30 - 2E3F	␿	␿	␿	␿	␿	␿	␿	␿	␿	␿	␿	␿	␿	␿	␿	␿
U+2E40 - 2E4F	␿	␿	␿	␿	␿	␿	␿	␿	␿	␿	␿	␿	␿	␿	␿	␿
U+2E50 - 2E5F	␿	␿	␿	␿	␿	␿	␿	␿	␿	␿	␿	␿	␿	␿	␿	␿
Enclosed CJK Letters and Months																
U+3240 - 324F	-	-	-	-	-	-	-	-	㐀	㐁	㐂	㐃	㐄	㐅	㐆	㐇
U+3250 - 325F	PTE	㐈	㐉	㐊	㐋	㐌	㐍	㐎	㐏	㐐	㐑	㐒	㐓	㐔	㐕	㐖
U+32B0 - 32BF	-	㐗	㐘	㐙	㐚	㐛	㐜	㐝	㐞	㐟	㐠	㐡	㐢	㐣	㐤	㐥
CJK Compatibility																
U+3370 - 337F	-	hPa	da	AU	bar	oV	pc	dm	dm ²	dm ³	-	-	-	-	-	-
U+3380 - 338F	pA	nA	μA	mA	kA	KB	MB	GB	cal	kcal	pF	nF	μF	μg	mg	kg
U+3390 - 339F	Hz	kHz	MHz	GHz	THz	μl	ml	dl	kl	fm	nm	μm	mm	cm	km	m ²
U+33A0 - 33AF	cm ²	m ²	km ²	mm ³	cm ³	m ³	km ³	m/s	m/s ²	Pa	kPa	MPa	GPa	rad	rad/s	rad/s ²
U+33B0 - 33BF	ps	ns	μs	ms	pV	nV	μV	mV	kV	MV	pW	nW	μW	mW	kW	MW
U+33C0 - 33CF	kΩ	MΩ	am	Bq	cc	cd	C/kg	CO	dB	Gy	ha	HP	in	KK	KM	kt
U+33D0 - 33DF	lm	ln	log	Lx	mb	ml	mol	pH	pm	ppm	PR	sr	Sv	Wb	-	-
Yijing Hexagram Symbols																
U+4DC0 - 4DCF	䷀	䷁	䷂	䷃	䷄	䷅	䷆	䷇	䷈	䷉	䷊	䷋	䷌	䷍	䷎	䷏
U+4DD0 - 4DDF	䷐	䷑	䷒	䷓	䷔	䷕	䷖	䷗	䷘	䷙	䷚	䷛	䷜	䷝	䷞	䷟
U+4DE0 - 4DEF	䷠	䷡	䷢	䷣	䷤	䷥	䷦	䷧	䷨	䷩	䷪	䷫	䷬	䷭	䷮	䷯
U+4DF0 - 4DFF	䷰	䷱	䷲	䷳	䷴	䷵	䷶	䷷	䷸	䷹	䷺	䷻	䷼	䷽	䷾	䷿

Table 4: JuliaMono-Regular *cont.*

	0	1	2	3	4	5	6	7	8	9	A	B	C	D	E	F
Yi Radicals																
U+A5F0 - A5FF	-	-	-	-	-	-	-	-	-	-	-	-	-	-	-	3
U+A600 - A60F	𐍎	𐍇	𐍈	𐍉	𐍊	𐍋	𐍌	𐍍	𐍎	𐍏	𐍐	𐍑	𐍒	𐍓	𐍔	𐍕
U+A610 - A61F	𐍖	𐍗	𐍘	𐍙	𐍚	𐍛	𐍜	𐍝	𐍞	𐍟	𐍠	𐍡	𐍢	𐍣	𐍤	𐍥
U+A620 - A62F	𐍦	1	𐍨	𐍩	𐍪	𐍫	𐍬	𐍭	𐍮	𐍯	𐍰	𐍱	𐍲	-	-	-
U+A640 - A64F	𐍳	𐍴	𐍵	𐍶	𐍷	𐍸	𐍹	𐍺	𐍻	𐍼	𐍽	𐍾	𐍿	𐎀	𐎁	𐎂
U+A650 - A65F	𐎃	𐎄	𐎅	𐎆	𐎇	𐎈	𐎉	𐎊	𐎋	𐎌	𐎍	𐎎	𐎏	𐎐	𐎑	𐎒
U+A660 - A66F	𐎓	𐎔	𐎕	𐎖	𐎗	𐎘	𐎙	𐎚	𐎛	𐎜	𐎝	𐎞	𐎟	𐎠	𐎡	𐎢
U+A670 - A67F	𐎣	𐎤	𐎥	𐎦	𐎧	𐎨	𐎩	𐎪	𐎫	𐎬	𐎭	𐎮	𐎯	𐎰	𐎱	𐎲
U+A680 - A68F	𐎳	𐎴	𐎵	𐎶	𐎷	𐎸	𐎹	𐎺	𐎻	𐎼	𐎽	𐎾	𐎿	𐏀	𐏁	𐏂
U+A690 - A69F	𐏃	𐏄	𐏅	𐏆	𐏇	𐏈	𐏉	𐏊	𐏋	𐏌	𐏍	𐏎	𐏏	𐏐	𐏑	𐏒
Modifier Tone Letters																
U+A700 - A70F																
U+A710 - A71F	𐏓	𐏔	𐏕	𐏖	𐏗	𐏘	𐏙	𐏚	𐏛	𐏜	𐏝	𐏞	𐏟	𐏠	𐏡	𐏢
Latin Extended-D																
U+A720 - A72F	𐐀	𐐁	𐐂	𐐃	𐐄	𐐅	𐐆	𐐇	𐐈	𐐉	𐐊	𐐋	𐐌	𐐍	𐐎	𐐏
U+A730 - A73F	𐐐	𐐑	𐐒	𐐓	𐐔	𐐕	𐐖	𐐗	𐐘	𐐙	𐐚	𐐛	𐐜	𐐝	𐐞	𐐟
U+A740 - A74F	𐐠	𐐡	𐐢	𐐣	𐐤	𐐥	𐐦	𐐧	𐐨	𐐩	𐐪	𐐫	𐐬	𐐭	𐐮	𐐯
U+A750 - A75F	𐐰	𐐱	𐐲	𐐳	𐐴	𐐵	𐐶	𐐷	𐐸	𐐹	𐐺	𐐻	𐐼	𐐽	𐐾	𐐿
U+A760 - A76F	𐑀	𐑁	𐑂	𐑃	𐑄	𐑅	𐑆	𐑇	𐑈	𐑉	𐑊	𐑋	𐑌	𐑍	𐑎	𐑏
U+A770 - A77F	𐑐	𐑑	𐑒	𐑓	𐑔	𐑕	𐑖	𐑗	𐑘	𐑙	𐑚	𐑛	𐑜	𐑝	𐑞	𐑟
U+A780 - A78F	𐑠	𐑡	𐑢	𐑣	𐑤	𐑥	𐑦	𐑧	𐑨	𐑩	𐑪	𐑫	𐑬	𐑭	𐑮	𐑯
U+A790 - A79F	𐑰	𐑱	𐑲	𐑳	𐑴	𐑵	𐑶	𐑷	𐑸	𐑹	𐑺	𐑻	𐑼	𐑽	𐑾	𐑿
U+A7A0 - A7AF	𐒀	𐒁	𐒂	𐒃	𐒄	𐒅	𐒆	𐒇	𐒈	𐒉	𐒊	𐒋	𐒌	𐒍	𐒎	𐒏
U+A7B0 - A7BF	𐒐	𐒑	𐒒	𐒓	𐒔	𐒕	𐒖	𐒗	𐒘	𐒙	𐒚	𐒛	𐒜	𐒝	𐒞	𐒟
U+A7C0 - A7CF	𐒠	𐒡	𐒢	𐒣	𐒤	𐒥	𐒦	𐒧	𐒨	𐒩	𐒪	𐒫	𐒬	𐒭	𐒮	𐒯

Table 4: JuliaMono-Regular *cont.*

	0	1	2	3	4	5	6	7	8	9	A	B	C	D	E	F
U+A7D0–A7DF	Ɔ	ɔ	Ɔ	Ɔ	Ɔ	Ɔ	Ɔ	Ɔ	Ɔ	Ɔ	Ɔ	Ɔ	Ɔ	Ɔ	Ɔ	Ɔ
U+A7F0–A7FF	-	s	c	F	Q	4	4	4	#	œ	W	7	9	W	I	W

Rejang

U+A950–A95F	-	-	-	-	-	-	-	-	-	-	-	-	-	-	-	ᮊ
-------------	---	---	---	---	---	---	---	---	---	---	---	---	---	---	---	---

Cham

U+AA50–AA5F	-	-	-	-	-	-	-	-	-	-	-	-	ᩈ	-	-	-
-------------	---	---	---	---	---	---	---	---	---	---	---	---	---	---	---	---

LatinExtended-E

U+AB30–AB3F	Ḃ	Ḅ	Ḅ	Ḅ	Ḅ	f	g	Ḅ	Ḅ	Ḅ	Ḅ	Ḅ	Ḅ	Ḅ	Ḅ	Ḅ
U+AB40–AB4F	Ḅ	Ḅ	Ḅ	Ḅ	Ḅ	Ḅ	Ḅ	Ḅ	Ḅ	Ḅ	Ḅ	Ḅ	Ḅ	Ḅ	Ḅ	Ḅ
U+AB50–AB5F	Ḅ	Ḅ	Ḅ	Ḅ	Ḅ	Ḅ	Ḅ	Ḅ	Ḅ	Ḅ	Ḅ	Ḅ	Ḅ	Ḅ	Ḅ	Ḅ
U+AB60–AB6F	Ḅ	Ḅ	Ḅ	Ḅ	Ḅ	Ḅ	Ḅ	Ḅ	Ḅ	Ḅ	Ḅ	Ḅ	Ḅ	Ḅ	Ḅ	Ḅ

Private Use Area

U+E0A0–E0AF	ᮊ	ᮊ	ᮊ	ᮊ	-	-	-	-	-	-	-	-	-	-	-	-
U+E0B0–E0BF	ᮊ	>	ᮊ	<	ᮊ)	ᮊ	(ᮊ	\	ᮊ	/	ᮊ	/	ᮊ	\
U+E230–E23F	-	-	-	-	-	-	-	-	-	-	-	-	-	-	ᮊ	-
U+E250–E25F	-	-	-	-	-	-	ᮊ	-	-	-	-	-	-	-	-	-
U+E270–E27F	-	-	-	-	-	ᮊ	-	-	-	-	-	-	-	-	-	-
U+E600–E60F	-	-	-	-	-	-	ᮊ	-	ᮊ	ᮊ	-	-	js	-	<	-
U+E610–E61F	-	ᮊ	ᮊ	ᮊ	#	*	-	-	-	-	-	-	ᮊ	ᮊ	-	-
U+E620–E62F	-	-	-	-	ᮊ	-	-	ᮊ	-	-	ᮊ	ᮊ	ᮊ	-	-	-
U+E700–E70F	-	-	-	-	-	-	-	-	ᮊ	-	-	-	-	-	-	-
U+E710–E71F	-	ᮊ	ᮊ	-	-	-	-	-	-	-	-	-	-	-	-	-
U+E720–E72F	-	-	-	-	-	ᮊ	ᮊ	ᮊ	ᮊ	ᮊ	-	-	-	-	-	-

Table 4: JuliaMono-Regular *cont.*[illegible]

Table 4: JuliaMono-Regular *cont.*[illegible]

Alphabetic Presentation Forms

U+FB00–FB0F	ff	f	i	f	l	f	f	f	f	st	-	-	-	-	-	-	-	-
U+FB10–FB1F	-	-	-	𐤀	𐤁	𐤂	𐤃	𐤄	-	-	-	-	-	-	𐤅	𐤆	𐤇	𐤈
U+FB20–FB2F	ע	א	ד	ה	כ	ל	ם	ר	ת	י	ש	ש	ש	ש	א	א	א	א
U+FB30–FB3F	א	ב	ג	ד	ה	ו	ז	-	ט	י	ך	כ	ל	-	מ	-	-	-
U+FB40–FB4F	ב	ס	-	ף	פ	-	צ	ק	ר	ש	ת	ו	ב	כ	פ	א	-	-

Arabic Presentation Forms-A

[illegible]

Combining Half Marks

U+FE20 - FE2F

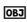

Small Form Variants

U+FE50–FE5F , - . - ; : ? ! - () { } [] #
U+FE60–FE6F & * + - < > = - \ \$ % @ - - - -

Arabic Presentation Forms-B

[illegible]

Table 4: JuliaMono-Regular *cont.*

	0	1	2	3	4	5	6	7	8	9	A	B	C	D	E	F
	Specials ...															
U+FFF0 - FFFF	-	-	-	-	-	-	-	-	-	-					-	-

Total number of glyphs shown from JuliaMono-Regular: 7469