

JuliaMono – a monospaced font for scientific and technical writing

Herbert Voß

October 13, 2025

Contents

1	Introduction	1
2	The font files	2
3	Font examples	4
3.1	JuliaMono Light	4
3.2	JuliaMono Regular	4
3.3	JuliaMono Medium	4
3.4	JuliaMono SemiBold	5
3.5	JuliaMono ExtraBold	5
3.6	JuliaMono Black	5
4	Contextual and stylistic alternates (»ligatures«)	8
4.1	Ligatures	8
4.2	Stylistic Alternatives	8
4.2.1	Slashed Zero	8
4.2.2	Stylistic Sets	8
4.2.3	Character Variations	9
5	Examples	10
6	The font list of JuliaMono	11

1 Introduction

The typeface was introduced at the 2020 Julia Programming Language conference, JuliaCon as my contribution to the festivities. [1]

2 The font files

The font files are copyright by the »JuliaMono Project Authors« (<https://github.com/cormullion/juliamono>) with an OFL license »This Font Software is licensed under the SIL Open Font License, Version 1.1. This license is available with a FAQ at <https://scripts.sil.org/OFL>.



```
voss>juliamono:$ luafindfont juliamono
```

No.	Filename	Symbolic	Path
1.	JuliaMono-Black.ttf	juliamono	/Users/voss/Library/Fonts/JuliaMono/
2.	JuliaMono-BlackItalic.ttf	juliamono	/Users/voss/Library/Fonts/JuliaMono/
3.	JuliaMono-Bold.ttf	juliamono	/Users/voss/Library/Fonts/JuliaMono/
4.	JuliaMono-BoldItalic.ttf	juliamono	/Users/voss/Library/Fonts/JuliaMono/
5.	JuliaMono-ExtraBold.ttf	juliamono	/Users/voss/Library/Fonts/JuliaMono/
6.	JuliaMono-ExtraBoldItalic.ttf	juliamono	/Users/voss/Library/Fonts/JuliaMono/
7.	JuliaMono-Light.ttf	juliamono	/Users/voss/Library/Fonts/JuliaMono/
8.	JuliaMono-LightItalic.ttf	juliamono	/Users/voss/Library/Fonts/JuliaMono/
9.	JuliaMono-Medium.ttf	juliamono	/Users/voss/Library/Fonts/JuliaMono/
10.	JuliaMono-MediumItalic.ttf	juliamono	/Users/voss/Library/Fonts/JuliaMono/
11.	JuliaMono-Regular.ttf	juliamono	/Users/voss/Library/Fonts/JuliaMono/
12.	JuliaMono-RegularItalic.ttf	juliamono	/Users/voss/Library/Fonts/JuliaMono/
13.	JuliaMono-SemiBold.ttf	juliamono	/Users/voss/Library/Fonts/JuliaMono/
14.	JuliaMono-SemiBoldItalic.ttf	juliamono	/Users/voss/Library/Fonts/JuliaMono/

The package juliamono supports only the typewriter family with specific optional arguments:

<i>name</i>	<i>value</i>	<i>meaning</i>
DefaultFeatures	code	for all font styles
Light	false	
Medium	false	
Semi	false	
Black	false	
ExtraBold	false	
calt	true	Ligatures
zero	true	Slashed zero
Scale	1	
FakeStretch	1	

```
\usepackage[Light]{juliamono}% Regular and Italic
```

```
\ttfamily
```

```
Default text, \textbf{Bold text}, \textit{Italic text}, \textbf{\textit{Bold Italic text}}
```

```
Default text, Bold text, Italic text, Bold Italic text
```

```
\usepackage[Medium]{juliamono}% Regular and Italic
```

```
\ttfamily
```

```
Default text, \textbf{Bold text}, \textit{Italic text}, \textbf{\textit{Bold Italic text}}
```

```
Default text, Bold text, Italic text, Bold Italic text
```

```
\usepackage[Semi]{juliamono}% Bold and BoldItalic
```

```
\ttfamily
```

```
Default text, \textbf{Bold text}, \textit{Italic text}, \textbf{\textit{Bold Italic text}}
```

```
Default text, Bold text, Italic text, Bold Italic text
```

```
\usepackage[ExtraBold]{juliamono}% Bold and BoldItalic
```

```
\ttfamily
```

```
Default text, \textbf{Bold text}, \textit{Italic text}, \textbf{\textit{Bold Italic text}}
```

```
Default text, Bold text, Italic text, Bold Italic text
```

```
\usepackage[Black]{juliamono}% Bold and BoldItalic
```

```
\ttfamily
```

```
Default text, \textbf{Bold text}, \textit{Italic text}, \textbf{\textit{Bold Italic text}}
```

```
Default text, Bold text, Italic text, Bold Italic text
```

The fonts are preset with `Scale=0.92`. For this documentation we use instead:

```
\usepackage[Scale=0.88,FakeStretch=0.9]{juliamono}
```


abcdefghijklmnopqrstuvwxyzáéóúâëðùçđ 12345
 ABCDEFGHIJKLMNOPQRSTUVWXYZÁÉÓÚÂËÐÙÇÐ 67890
 {}[]()<>\$%-+/_%#@&|~?'"",.;:!
 „ı Œƒ[]!#ı €œ†Ŧˆøπ ±∂, ∂f°ª Δ@ææ√∫μ
 “”£fi.“”,‰,“”ˆØ0Π•Æefl ιόϊĩτἰά≥þùçð()

3.4 JuliaMono SemiBold

abcdefghijklmnopqrstuvwxyzáèóúàèòùçà 12345
 ABCDEFGHIJKLMNOPQRSTUVWXYZÁÉÓÚÀÈÒÙÇÀ 67890
 {}[]()<>\$*-+/_%^@&|~?'",.~:!
 „¡“¶[]|≠|«Σε∅†Ω/∅∏ •±â,∂f∞³Δ@œæç√/μ
 “~”ffi.~°~»,‰,~“ÁÜΠ∅•“ÆEfl 1ó1ĩĩĩ!â±ùçç()~÷

(Bold)

abcdefghijklmnopqrstuvwxyzáéóúàèòùçå 12345
ABCDEFGHIJKLMNOPQRSTUVWXYZÁÉÓÚÀÈÒÙÇÅ 67890
{ } [] () < > \$ % * - + = / _ % ^ & | ~ ? ' " , . ; : !
„ı““Œ[]]!#ı«“Σ€œ†Ω“/øþ •±â,ðƒœªΔ@œæç√/μ
“~“ƒfi.~“»„‰“~“ÁÚØΠ°•“Æƒℓ 1óİĩ™İâ≥þÙçø()~÷

(*Italic*)
 abcdefghijklmnopqrstuvwxyzáéóúàèòùçà 12345
 ABCDEFGHIJKLMNOPQRSTUVWXYZÁÉÓÚÀÈÒÙÇÀ 67890
 {}[]()<>\$%-+/_%^\&@{~?'"',.;:!
 „i“fl[]|≠¿«Σε⊗†Ω∕∅∏ •±â,∂f⊗^gΔ@ææç√∫μ
 “~”£fi.~°»„‰ „~”Á00Π°▲’Æfℓ ιóíî™íÎ>þùçç()~÷-

(***BoldItalic***)
 abcdefghijklmnopqrstuvwxyzáéóúàèùçâ 12345
 ABCDEFGHIJKLMNOPQRSTUVWXYZÁÉÓÚÀÈÙÇÂ 67890
 {}[]()<>\$%-+/_%^\&@|~?'"',.;:!
 „i“¶¶[]|≠¿«Σε∅†Ω∕∅∏ •±â,∂f∞^gΔ@ææç√∫μ
 “”£fi.˘˘»„‰ „˘˘Á0Π∅•‘Æefl ιόϊϊ™ÎÁ>÷ùçç()˘ ÷

3.5 JuliaMono ExtraBold

abcdefghijklmnopqrstuvwxyzáéóúàèòùç̣ 12345
 ABCDEFGHIJKLMNOPQRSTUVWXYZÁÉÓÚÀÈÒÙÇ̣ 67890
 {}[]()<>\$*-+/_%^@&|~?'",.;:!
 „¡“¶[]!#% ‚ «Σεο†Ω/øþ •±â ,ðƒα³Δ@æœç√/μ
 “¬”£fi.“°.”„»„_ „ˆÁÖΠø•Æefl lóíĩîĬăžëüçø)ˇ÷-

(ExtraBold)
abcdefghijklmnopqrstuvwxyzáéóúàèòùçà 12345
ABCDEFGHIJKLMNOPQRSTUVWXYZÁÉÓÚÀÈÒÙÇÀ 67890
{ } [] () < > \$ % * - + = / _ ^ @ & | ~ ? ' " , . ; : !
„ı“Œƒ[]|≠Ł«Σ€©†Ω•øþ •±±,ðfæªºΔ@œæç√μ
“-”£fi-˙~%‰ˇ~ ÁÔΠ◊•Æefl lóĩĩĩĬâ≥÷ÜÇ◊() ˇ ÷

[illegible]

(***BoldItalic***)
***abcdefghijklmnopqrstuvwxyzáéóúâèòùçà 12345
ABCDEF GHIJKLMNOPQRSTUVWXYZÁÉÓÚÂÈÒÙÇÀ 67890
{}[]()<>\$%-+=/_%^@&|~?'",.;:!;
„¡ ¢£¥¦§¨ª«¬®¯°±²³´µ¶·¸¹º»¼½¾¿À Á Â Ã Ä Å Æ Ç È É Ê Ë
Ì Í Î Ï Ð Ñ Ò Ó Ô Õ Ö × Ø Ù Ú Û Ü Ý Þ à á â ã***

3.6 JuliaMono Black

abcdefghijklmnopqrstuvwxyzáéóúàèòùçà 12345
 ABCDEFGHIJKLMNOPQRSTUVWXYZÁÉÓÚÀÈÒÙÇÀ 67890
 {}[]()<>\$*-+/_%&@~?'"",.;:!
 „i“¶[[]|¿!«\$€¢†♀/øþ •±â,ðfæªΔΔααεξ/√μ
 “~”f fi.~°»»»»~Λ0Πø••Ææfl òíîïñāâ±ùÇøç()÷÷÷

(Bold)

abcdefghijklmnopqrstuvwxyzáéóúàèòùçă 12345
ABCDEFGHIJKLMNOPQRSTUVWXYZÁÉÓÚÀÈÒÙÇĂ 67890

{ } [] () < > \$ % - + = / _ % ^ & @ ! ~ ? " ' , . ; : !
„ıı“Œ[]|#¿'€œ†‡•øþ •±â,ðfœªΔ∆œæç/√μ
“”£fi¬˙˚„‰˘˜˝ÁÚÏΠ◊•Æefl îôïî™íÄ≥÷ÜÇ◊() ` ÷

(Italic)

abcdefghijklmnopqrstuvwxyzáéóúðèòùčđ 12345
ABCDEFGHIJKLMNOPQRSTUVWXYZÁÉÓÚÁÈÒÙČĎ 67890
{ } [] () < > \$ % - + = / _ ^ * @ & | ~ ? ' " , . ; : !
„ i “ŋ[] | ≠ z ‘ « » € ¢ ¤ § ¨ ø þ • ± ∂ ∫ ∏ Δ ⊕ ⊗ ⅈ μ
“ ” £ ¤ ¥ ¦ § ¨ © ª « ¬ ® ¯ ° ± ² ³ ´ µ ¶ · ¸ ¹ º » ¼ ½ ¾ ÷

(BoldItalic)

[illegible]

The vertical rule shows that the complete tabular is set in the typewriter font.

Ancient Greek	Ἄδμηθ', ὁρᾷς γὰρ τὰμὰ πράγμαθ' ὥς ἔχει, λέξαι θέλω σοι πρὶν θανεῖν ἃ βούλομαι.
Armenian	ԻՄ օղաթիւը լի է օճաճկերով
Bulgarian	Я, пазачът Вальо уж бди, а скришом хапва кюфтенца зад щайгите.
Catalan	«Dóna amor que seràs feliç!». Això, il·lús company geniüt, ja és un lluiüt rètöl blavís d'onze kWh.
Czech	Zvlášť zákeřný učeň s ěolíčky běží podél zóny úlů
Danish	Quizdeltagerne spiste jordbær med fløde, mens cirkusklovnen Walther spillede på xylofon.
English	Sphinx of black quartz, judge my vow.
Estonian	Põdur Zagrebi tšellomängija-fõljetonist Ciqo külmetas kehvas garaažis
Finnish	Charles Darwin jammaili Åken hevixylofonilla Qatarin yöpub Zeligissä.
French	Voix ambiguë d'un cœur qui au zéphyr préfère les jattes de kiwi.
Georgian	სწრაფი ყავისფერი მელა აბბება ზაზაძე ძაღლს.
German	Victor jagt zwölf Boxkämpfer quer über den großen Sylter Deich.
Greek	Ταχίστη αλώπηξ βαφής ψημένη γη, δρασκελίζει υπέρ νωθρού κυνός.
Guarani	Hĩlandiagua kuñanguéra oho peteĩ sa'yju ypa'ũme Gavõme ombo'e haġ ua ingyleñe'ẽ mitãnguérare ne'ẽndy'ỹ.
Hungarian	Jó foxim és don Quijote húszwattos lámpánál ülve egy pár búvös cipőt készít.
IPA	[ɣʷʌʔ.nas.doːŋ.kʰl̥ja] [ŋan.ɳʑi wo.ɕi uẽn.xwa]
Icelandic	Kæmi nú ðxi hér, ykist þjófum nú bæði víl og ádrepa.
Irish	Čuaig bé mórsác le dlútspád fíorfinn trí hata mo dea-þorcáin big.
Latvian	Muļķa hipiji mēģina brīvi nogaršot celofāna žņaudzējčūsku.
Lithuanian	Įlinkdama fechtuotojo špaga sublykčiojusi pragrėžė arvalų arbūzą.
Macedonian	Сидарски пејзаж: шугав билмез со чудење цвака кофте и кел на туф цех.
Norwegian	Jeg begynte å fortære en sandwich mens jeg kjørte taxi på vei til quiz
Polish	Pchnąć w tę łódź jeża lub ośm skrzyń fig.
Portuguese	Luís argüia à Júlia que «brações, fé, chá, óxido, pôr, zângão» eram palavras do português.
Romanian	Înjurând pițigăiat, zoofobul comandă vexat whisky și tequila.
Russian	Широкая электрификация южных губерний даст мощный толчок подъёму сельского хозяйства.
Scottish	Mus d'fhàg Cèit-Ùna ròp Ì le ob.
Serbian	Ajшо, лепото и чежњо, за љубав срца мога дођи у Хаџиће на кафу.
Spanish	Benjamín pidió una bebida de kiwi y fresa; Noé, sin vergüenza, la más champaña del menú.
Swedish	Flygande bäckasiner söka hwila på mjuka tuvor.
Turkish	Pijamalı hasta yağız şoföre çabucak güvendi.

Ukrainian Чуєш їх, доцю, га? Кумедна ж ти, прощайся без гольфів!

4 Contextual and stylistic alternates («ligatures»)

4.1 Ligatures

The ligatures with a double dash are only possible, if the \TeX ligatures are disabled, which is done by the package by default.

In	Out
->	→
=>	⇒
>	▷
<	◁
::	∴
<-	←
->	→
<->	↔

There are two commands to set and unset this behaviour. With \JuliaUnsetCalt the ligatures are reset to the ones from \TeX :

-> -> => - (\TeX -active)	1 \ttfamily \JuliaUnsetCalt
→ → ⇒ --- (\TeX -inactive)	2 -> --> => --- (\TeX -active)
	3
	4 \JuliaSetCalt
	5 -> --> => --- (\TeX -inactive)

4.2 Stylistic Alternatives

4.2.1 Slashed Zero

By default the zero has a slash instead of a dot:

0 0

It can be reset to the dot with the package option `zero=false` or inside the document with

$\text{\addfontfeature{RawFeature}=-zero}$

4.2.2 Stylistic Sets

It can be set by the two macros $\text{\Lss{number}}\{\text{text}\}$ and \LSS<number> . The first one has an argument which will be set locally with the given number and the second one works like a switch. It is global to the current group.

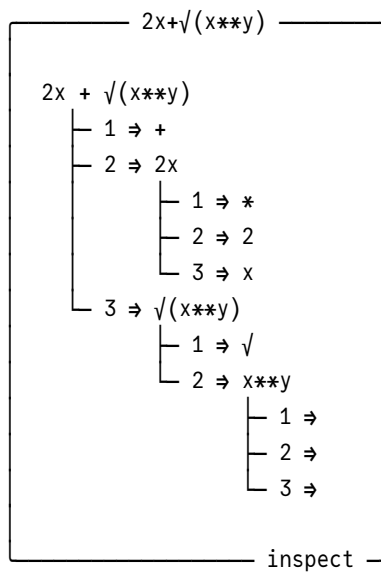
<i>no</i>	<i>Default</i>	<i>Alt</i>	
01	g	g	not for italic
02	@	@	
03	Jj	Jj	
04	0	0	
05	*	*	lighter asterisk
06	a	a	not for italic
07	`	`	smaller grave
08	->	→	distinct ligatures
09	f	f	
10	r	r	
11	`	`	thinner grave
12	====	====	joining equals
13	<!--	<!--	HTML comment
14	==	==	double equals
15	<i>ABC...</i>	<i>ABC...</i>	Math Script Roundhand
16	()[]{}	()[]{}	smaller parentheses etc.
17	⠠⠠⠠⠠	⠠⠠⠠⠠	quadrants replace Braille dots
18	<i>ABC...</i>	<i>ABC...</i>	Ball-point pen math script
20	(-)	(-)	splashtidy

4.2.3 Character Variations

It can be set by the two macros `\Lcv{number}{text}` and `\LCV<number>`. The first one has an argument which will be set locally with the given number and the second one works like a switch. It is global to the current group.

<i>no</i>	<i>Default</i>	<i>Var</i>	
01	3	3	
02	7	7	
03	~	~	alternate ASCII tilde
04	l	l	alternate l

5 Examples


$$\frac{1}{4} \quad \frac{1}{2} \quad \frac{3}{4} \quad \frac{1}{7} \quad \frac{1}{9} \quad \frac{1}{10} \quad \frac{1}{3} \quad \frac{2}{3} \quad \frac{1}{5} \quad \frac{2}{5} \quad \frac{3}{5} \quad \frac{4}{5} \quad \frac{1}{6} \quad \frac{5}{6} \quad \frac{1}{8} \quad \frac{3}{8} \quad \frac{5}{8} \quad \frac{7}{8} \quad 1 \quad \frac{0}{3}$$

A B D E F G I J K L M O S T U V W X Y C H N P Q R Z

π γ Γ Π Σ D d e i j a b c d e f g h i j k l m n o p

q r s t u v w x y z 0 1 2 3 4 5 6 7 8 9

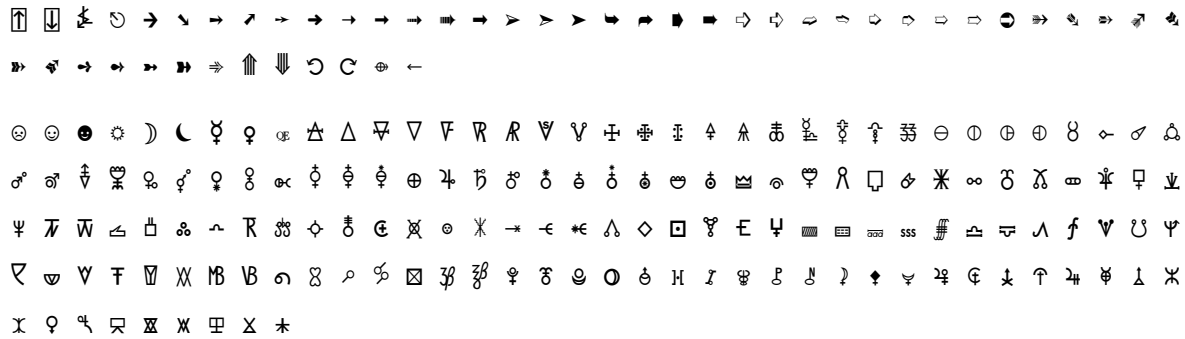
c d f ph c u cf pf cz w y h C D E F G H I J K L M N O P Q R S T U V W X Y Z

1 2 3 4 5 6 7 8 9 10 11 12 13 14 15 16 17 18 19 20 21 22 23 24 25 26 27 28 29 30 31 32 33 34 35 36 37 38 39 40 41 42 43 44 45 46 47 48 49 50 51 52 53 54 55 56 57 58 59 60 61 62 63 64 65 66 67 68 69 70 71 72 73 74 75 76 77 78 79 80 81 82 83 84 85 86 87 88 89 90 91 92 93 94 95 96 97 98 99 100 101 102 103 104 105 106 107 108 109 110 111 112 113 114 115 116 117 118 119 120 121 122 123 124 125 126 127 128 129 130 131 132 133 134 135 136 137 138 139 140 141 142 143 144 145 146 147 148 149 150 151 152 153 154 155 156 157 158 159 160 161 162 163 164 165 166 167 168 169 170 171 172 173 174 175 176 177 178 179 180 181 182 183 184 185 186 187 188 189 190 191 192 193 194 195 196 197 198 199 200 201 202 203 204 205 206 207 208 209 210 211 212 213 214 215 216 217 218 219 220 221 222 223 224 225 226 227 228 229 230 231 232 233 234 235 236 237 238 239 240 241 242 243 244 245 246 247 248 249 250 251 252 253 254 255 256 257 258 259 260 261 262 263 264 265 266 267 268 269 270 271 272 273 274 275 276 277 278 279 280 281 282 283 284 285 286 287 288 289 290 291 292 293 294 295 296 297 298 299 300 301 302 303 304 305 306 307 308 309 310 311 312 313 314 315 316 317 318 319 320 321 322 323 324 325 326 327 328 329 330 331 332 333 334 335 336 337 338 339 340 341 342 343 344 345 346 347 348 349 350 351 352 353 354 355 356 357 358 359 360 361 362 363 364 365 366 367 368 369 370 371 372 373 374 375 376 377 378 379 380 381 382 383 384 385 386 387 388 389 390 391 392 393 394 395 396 397 398 399 400 401 402 403 404 405 406 407 408 409 410 411 412 413 414 415 416 417 418 419 420 421 422 423 424 425 426 427 428 429 430 431 432 433 434 435 436 437 438 439 440 441 442 443 444 445 446 447 448 449 450 451 452 453 454 455 456 457 458 459 460 461 462 463 464 465 466 467 468 469 470 471 472 473 474 475 476 477 478 479 480 481 482 483 484 485 486 487 488 489 490 491 492 493 494 495 496 497 498 499 500 501 502 503 504 505 506 507 508 509 510 511 512 513 514 515 516 517 518 519 520 521 522 523 524 525 526 527 528 529 530 531 532 533 534 535 536 537 538 539 540 541 542 543 544 545 546 547 548 549 550 551 552 553 554 555 556 557 558 559 560 561 562 563 564 565 566 567 568 569 570 571 572 573 574 575 576 577 578 579 580 581 582 583 584 585 586 587 588 589 590 591 592 593 594 595 596 597 598 599 600 601 602 603 604 605 606 607 608 609 610 611 612 613 614 615 616 617 618 619 620 621 622 623 624 625 626 627 628 629 630 631 632 633 634 635 636 637 638 639 640 641 642 643 644 645 646 647 648 649 650 651 652 653 654 655 656 657 658 659 660 661 662 663 664 665 666 667 668 669 670 671 672 673 674 675 676 677 678 679 680 681 682 683 684 685 686 687 688 689 690 691 692 693 694 695 696 697 698 699 700 701 702 703 704 705 706 707 708 709 710 711 712 713 714 715 716 717 718 719 720 721 722 723 724 725 726 727 728 729 730 731 732 733 734 735 736 737 738 739 740 741 742 743 744 745 746 747 748 749 750 751 752 753 754 755 756 757 758 759 760 761 762 763 764 765 766 767 768 769 770 771 772 773 774 775 776 777 778 779 780 781 782 783 784 785 786 787 788 789 790 791 792 793 794 795 796 797 798 799 800 801 802 803 804 805 806 807 808 809 810 811 812 813 814 815 816 817 818 819 820 821 822 823 824 825 826 827 828 829 830 831 832 833 834 835 836 837 838 839 840 841 842 843 844 845 846 847 848 849 850 851 852 853 854 855 856 857 858 859 860 861 862 863 864 865 866 867 868 869 870 871 872 873 874 875 876 877 878 879 880 881 882 883 884 885 886 887 888 889 890 891 892 893 894 895 896 897 898 899 900 901 902 903 904 905 906 907 908 909 910 911 912 913 914 915 916 917 918 919 920 921 922 923 924 925 926 927 928 929 930 931 932 933 934 935 936 937 938 939 940 941 942 943 944 945 946 947 948 949 950 951 952 953 954 955 956 957 958 959 960 961 962 963 964 965 966 967 968 969 970 971 972 973 974 975 976 977 978 979 980 981 982 983 984 985 986 987 988 989 990 991 992 993 994 995 996 997 998 999 1000 1001 1002 1003 1004 1005 1006 1007 1008 1009 1010 1011 1012 1013 1014 1015 1016 1017 1018 1019 1020 1021 1022 1023 1024 1025 1026 1027 1028 1029 1030 1031 1032 1033 1034 1035 1036 1037 1038 1039 104

a b c d f h i j k l m n p q r s t u v w x y z *ABCDEFGHIJKLMN OP Q RSTUVW*
XYZ

Braille

[illegible]



References

- [1] Cormullion. *JuliaMono – a monospaced font for scientific and technical computing*. May 3, 2025. URL: <https://juliamono.netlify.app> (visited on 10/13/2025).

6 The font list of JuliaMono

Table 4: JuliaMono-Regular.ttf

	0	1	2	3	4	5	6	7	8	9	A	B	C	D	E	F
Basic Latin																
U+0000–000F	-	-	-	-	-	-	-	-	-	-	-	-	-	-	-	-
U+0020–002F		!	"	#	\$	%	&	'	()	*	+	,	-	.	/
U+0030–003F	0	1	2	3	4	5	6	7	8	9	:	;	<	=	>	?
U+0040–004F	@	A	B	C	D	E	F	G	H	I	J	K	L	M	N	O
U+0050–005F	P	Q	R	S	T	U	V	W	X	Y	Z	[\]	^	_
U+0060–006F	`	a	b	c	d	e	f	g	h	i	j	k	l	m	n	o
U+0070–007F	p	q	r	s	t	u	v	w	x	y	z	{		}	~	
Latin-1 Supplement																
U+00A0–00AF		¡	¢	£	¤	¥	¦	§	¨	©	ª	«	¬	®	¯	
U+00B0–00BF	°	±	²	³	´	µ	¶	·	¸	¹	º	»	¼	½	¾	¿

Table 4: JuliaMono-Regular.ttf *cont.*

	0	1	2	3	4	5	6	7	8	9	A	B	C	D	E	F
U+0240–024F	Ž	ʔ	ʔ	Ɓ	Ɔ	Λ	Ʒ	Ʒ	Ʒ	Ʒ	Ʒ	Ʒ	Ʒ	Ʒ	Ʒ	Ʒ

IPA Extensions

U+0250–025F	ɐ	ɑ	ɒ	ɓ	ɔ	ɔ̃	ɔ̄	ɔ̅	ɔ̆	ɔ̇	ɔ̈	ɔ̉	ɔ̊	ɔ̋	ɔ̌	ɔ̍
U+0260–026F	ɔ̎	ɔ̏	ɔ̐	ɔ̑	ɔ̒	ɔ̓	ɔ̔	ɔ̕	ɔ̖	ɔ̗	ɔ̘	ɔ̙	ɔ̚	ɔ̛	ɔ̜	ɔ̝
U+0270–027F	ɔ̞	ɔ̟	ɔ̠	ɔ̡	ɔ̢	ɔ̣	ɔ̤	ɔ̥	ɔ̦	ɔ̧	ɔ̨	ɔ̩	ɔ̪	ɔ̫	ɔ̬	ɔ̭
U+0280–028F	ɔ̮	ɔ̯	ɔ̰	ɔ̱	ɔ̲	ɔ̳	ɔ̴	ɔ̵	ɔ̶	ɔ̷	ɔ̸	ɔ̹	ɔ̺	ɔ̻	ɔ̼	ɔ̽
U+0290–029F	ɔ̾	ɔ̿	ɔ̺	ɔ̻	ɔ̼	ɔ̽	ɔ̾	ɔ̿	ɔ̺	ɔ̻	ɔ̼	ɔ̽	ɔ̾	ɔ̿	ɔ̺	ɔ̻
U+02A0–02AF	ɔ̿	ɔ̺	ɔ̻	ɔ̼	ɔ̽	ɔ̾	ɔ̿	ɔ̺	ɔ̻	ɔ̼	ɔ̽	ɔ̾	ɔ̿	ɔ̺	ɔ̻	ɔ̼

Spacing Modifier Letters

U+02B0–02BF	h	h̃	j	ɿ	ɿ̃	ɿ̄	ɿ̅	ɿ̆	ɿ̇	ɿ̈	ɿ̉	ɿ̊	ɿ̋	ɿ̌	ɿ̍	ɿ̎
U+02C0–02CF	ɿ̏	ɿ̐	ɿ̑	ɿ̒	ɿ̓	ɿ̔	ɿ̕	ɿ̖	ɿ̗	ɿ̘	ɿ̙	ɿ̚	ɿ̛	ɿ̜	ɿ̝	ɿ̞
U+02D0–02DF	ɿ̟	ɿ̠	ɿ̡	ɿ̢	ɿ̣	ɿ̤	ɿ̥	ɿ̦	ɿ̧	ɿ̨	ɿ̩	ɿ̪	ɿ̫	ɿ̬	ɿ̭	ɿ̮
U+02E0–02EF	ɿ̯	ɿ̰	ɿ̱	ɿ̲	ɿ̳	ɿ̴	ɿ̵	ɿ̶	ɿ̷	ɿ̸	ɿ̹	ɿ̺	ɿ̻	ɿ̼	ɿ̽	ɿ̾
U+02F0–02FF	ɿ̿	ɿ̺	ɿ̻	ɿ̼	ɿ̽	ɿ̾	ɿ̿	ɿ̺	ɿ̻	ɿ̼	ɿ̽	ɿ̾	ɿ̿	ɿ̺	ɿ̻	ɿ̼

Combining Diacritical Marks

U+0300–030F	˘	˙	˚	˛	˜	˝	˞	˟	ˠ	ˡ	ˢ	ˣ	ˤ	˥	˦	˧
U+0310–031F	˨	˩	˪	˫	ˬ	˭	ˮ	˯	˰	˱	˲	˳	˴	˵	˶	˷
U+0320–032F	˸	˹	˺	˻	˼	˽	˾	˿	˰	˱	˲	˳	˴	˵	˶	˷
U+0330–033F	˸	˹	˺	˻	˼	˽	˾	˿	˰	˱	˲	˳	˴	˵	˶	˷
U+0340–034F	˸	˹	˺	˻	˼	˽	˾	˿	˰	˱	˲	˳	˴	˵	˶	˷
U+0350–035F	˸	˹	˺	˻	˼	˽	˾	˿	˰	˱	˲	˳	˴	˵	˶	˷
U+0360–036F	˸	˹	˺	˻	˼	˽	˾	˿	˰	˱	˲	˳	˴	˵	˶	˷

Greek and Coptic

U+0370–037F	Ͱ	ͱ	Ͳ	ͳ	ʹ	͵	Ͷ	ͷ	͸	͹	ͺ	ͻ	ͼ	ͽ	Ϳ	̀
U+0380–038F	́	͂	̓	̈́	ͅ	͆	͇	͈	͉	͊	͋	͌	͍	͎	͏	͐
U+0390–039F	͑	͒	͓	͔	͕	͖	͗	͘	͙	͚	͛	͜	͝	͞	͟	͠

Table 4: JuliaMono-Regular.ttf *cont.*

	0	1	2	3	4	5	6	7	8	9	A	B	C	D	E	F
Armenian																
U+0530–053F	-	Ա	Բ	Գ	Դ	Ե	Զ	Է	Ը	Թ	Ժ	Ի	Լ	Խ	Ճ	Կ
U+0540–054F	Հ	Ձ	Ղ	Ճ	Ս	Յ	Շ	Ո	Չ	Պ	Ջ	Ռ	Ս	Վ	Տ	
U+0550–055F	Ր	Ց	Ի	Փ	Ք	Օ	Ֆ	-	-	Ս	Շ	Ր	Շ	Ս	Շ	Շ
U+0560–056F	Փ	Փ	Ք	Ք	Ք	Ք	Ք	Ք	Ք	Ք	Ք	Ք	Ք	Ք	Ք	Ք
U+0570–057F	Հ	Ճ	Ղ	Ճ	Ս	Յ	Շ	Ո	Չ	Պ	Ջ	Ռ	Ս	Վ	Տ	
U+0580–058F	Ր	Գ	Լ	Փ	Ք	Օ	Ֆ	Է	Ջ	Շ	Ր	Շ	Ր	Շ	Ր	Շ
Hebrew																
U+0590–059F	-	א	ב	ג	ד	ה	ו	ז	ח	ט	י	כ	ל	מ	נ	ס
U+05A0–05AF	פ	צ	ק	ר	ש	ת	י	י	י	י	י	י	י	י	י	י
U+05B0–05BF	י	י	י	י	י	י	י	י	י	י	י	י	י	י	י	י
U+05C0–05CF	י	י	י	י	י	י	י	י	י	י	י	י	י	י	י	י
U+05D0–05DF	א	ב	ג	ד	ה	ו	ז	ח	ט	י	כ	ל	מ	נ	ס	ת
U+05E0–05EF	ב	ס	ע	ר	פ	ץ	צ	ק	ר	ש	ת	-	-	-	-	י
U+05F0–05FF	י	י	י	י	י	-	-	-	-	-	-	-	-	-	-	-
Arabic																
U+0600–060F	أ	ب	ت	ث	ج	د	هـ	و	ز	ح	ط	ي	ك	ل	م	ن
U+0610–061F	-	-	-	-	-	-	-	-	-	-	-	-	-	-	-	-
U+0620–062F	ي	ع	أ	إ	ؤ	أ	أ	أ	أ	أ	أ	أ	أ	أ	أ	أ
U+0630–063F	ذ	ر	ز	س	ش	ص	ض	ط	ظ	ع	غ	-	-	-	-	-
U+0640–064F	-	ف	ق	ك	ل	م	ن	و	ي	ي	ي	ي	ي	ي	ي	ي
U+0650–065F	-	-	-	-	-	-	-	-	-	-	-	-	-	-	-	-
U+0660–066F	•	أ	ب	ج	د	هـ	و	ز	ح	ط	ي	ك	ل	م	ن	س
U+0670–067F	•	أ	-	-	-	-	-	-	-	-	-	-	-	-	-	-
U+0680–068F	-	-	-	-	-	-	-	-	-	-	-	-	-	-	-	-
U+0690–069F	ت	ث	-	-	-	-	-	-	-	-	-	-	-	-	-	-
U+06A0–06AF	-	و	-	-	ث	-	-	-	-	و	-	-	-	-	-	و

Table 4: JuliaMono-Regular.ttf *cont.*

	0	1	2	3	4	5	6	7	8	9	A	B	C	D	E	F
U+06B0–06BF	-	-	-	-	-	-	-	-	-	-	ﻝ	ﻝ	-	-	ﻝ	-
U+06C0–06CF	-	ﻝ	ﻝ	ﻝ	-	-	ﻝ	-	-	-	-	-	ﻝ	-	ﻝ	-
U+06D0–06DF	-	-	ﻝ	ﻝ	ﻝ	ﻝ	-	-	-	-	-	-	-	ﻝ	ﻝ	-
U+06E0–06FF	•		ﻝ	ﻝ	ﻝ	ﻝ	ﻝ	ﻝ	ﻝ	ﻝ	-	-	-	-	-	-

Syriac

U+0700–070F	✠	-	-	-	-	-	-	-	-	-	-	-	-	✠	-	-
-------------	---	---	---	---	---	---	---	---	---	---	---	---	---	---	---	---

NKo

U+07F0–07FF	-	-	-	-	-	-	-	✠	-	-	-	-	-	-	-	-
-------------	---	---	---	---	---	---	---	---	---	---	---	---	---	---	---	---

Devanagari

U+0960–096F	-	-	-	-	-	-	०	१	२	३	४	५	६	७	८	९
-------------	---	---	---	---	---	---	---	---	---	---	---	---	---	---	---	---

Bengali

U+09E0–09EF	-	-	-	-	-	-	০	১	২	৩	৪	৫	৬	৭	৮	৯
-------------	---	---	---	---	---	---	---	---	---	---	---	---	---	---	---	---

Tamil

U+0B80–0B8F	-	-	-	ஃ	-	-	-	-	-	-	-	-	-	-	-	-
-------------	---	---	---	---	---	---	---	---	---	---	---	---	---	---	---	---

Thai

U+0E30–0E3F	-	-	-	-	-	-	-	-	-	-	-	-	-	-	-	฿
-------------	---	---	---	---	---	---	---	---	---	---	---	---	---	---	---	---

Tibetan

U+0FC0–0FCF	-	-	-	-	-	-	-	-	-	-	འ	ཡ	ཧ	-	-	-
-------------	---	---	---	---	---	---	---	---	---	---	---	---	---	---	---	---

U+0FD0–0FDF	-	-	-	-	-	ཨ	ཉ	ཏ	ཐ	-	-	-	-	-	-	-
-------------	---	---	---	---	---	---	---	---	---	---	---	---	---	---	---	---

Georgian

U+10A0–10AF	Ⴀ	Ⴁ	Ⴂ	Ⴃ	Ⴄ	Ⴅ	Ⴆ	Ⴇ	Ⴈ	Ⴉ	Ⴊ	Ⴋ	Ⴌ	Ⴍ	Ⴎ	Ⴏ
-------------	---	---	---	---	---	---	---	---	---	---	---	---	---	---	---	---

U+10B0–10BF	Ⴐ	Ⴑ	Ⴒ	Ⴓ	Ⴔ	Ⴕ	Ⴖ	Ⴗ	Ⴘ	Ⴙ	Ⴚ	Ⴛ	Ⴜ	Ⴝ	Ⴞ	Ⴟ
-------------	---	---	---	---	---	---	---	---	---	---	---	---	---	---	---	---

U+10C0–10CF	Ⴚ	Ⴛ	Ⴜ	Ⴝ	Ⴞ	Ⴟ	-	Ⴚ	-	-	-	-	-	Ⴚ	-	-
-------------	---	---	---	---	---	---	---	---	---	---	---	---	---	---	---	---

Table 4: JuliaMono-Regular.ttf *cont.*

	0	1	2	3	4	5	6	7	8	9	A	B	C	D	E	F
U+1580–158F	𐌰	𐌱	𐌲	𐌳	𐌴	𐌵	𐌶	𐌷	𐌸	𐌹	𐌺	𐌻	𐌼	𐌽	𐌾	𐌿
U+1590–159F	𐌿	𐍀	𐍁	𐍂	𐍃	𐍄	𐍅	𐍆	𐍇	𐍈	𐍉	𐍊	𐍋	𐍌	𐍍	𐍎
U+15A0–15AF	𐍏	𐍐	𐍑	𐍒	𐍓	𐍔	𐍕	𐍖	𐍗	𐍘	𐍙	𐍚	𐍛	𐍜	𐍝	𐍞
U+15B0–15BF	𐍟	𐍠	𐍡	𐍢	𐍣	𐍤	𐍥	𐍦	𐍧	𐍨	𐍩	𐍪	𐍫	𐍬	𐍭	𐍮
U+15C0–15CF	𐍯	𐍰	𐍱	𐍲	𐍳	𐍴	𐍵	𐍶	𐍷	𐍸	𐍹	𐍺	𐍻	𐍼	𐍽	𐍾
U+15D0–15DF	𐍿	𐎀	𐎁	𐎂	𐎃	𐎄	𐎅	𐎆	𐎇	𐎈	𐎉	𐎊	𐎋	𐎌	𐎍	𐎎
U+15E0–15EF	𐎏	𐎐	𐎑	𐎒	𐎓	𐎔	𐎕	𐎖	𐎗	𐎘	𐎙	𐎚	𐎛	𐎜	𐎝	𐎞
U+15F0–15FF	𐎟	𐎠	𐎡	𐎢	𐎣	𐎤	𐎥	𐎦	𐎧	𐎨	𐎩	𐎪	𐎫	𐎬	𐎭	𐎮
U+1600–160F	𐎯	𐎰	𐎱	𐎲	𐎳	𐎴	𐎵	𐎶	𐎷	𐎸	𐎹	𐎺	𐎻	𐎼	𐎽	𐎾
U+1610–161F	𐎿	𐏀	𐏁	𐏂	𐏃	𐏄	𐏅	𐏆	𐏇	𐏈	𐏉	𐏊	𐏋	𐏌	𐏍	𐏎
U+1620–162F	𐏏	𐏐	𐏑	𐏒	𐏓	𐏔	𐏕	𐏖	𐏗	𐏘	𐏙	𐏚	𐏛	𐏜	𐏝	𐏞
U+1630–163F	𐏟	𐏠	𐏡	𐏢	𐏣	𐏤	𐏥	𐏦	𐏧	𐏨	𐏩	𐏪	𐏫	𐏬	𐏭	𐏮
U+1640–164F	𐏯	𐏰	𐏱	𐏲	𐏳	𐏴	𐏵	𐏶	𐏷	𐏸	𐏹	𐏺	𐏻	𐏼	𐏽	𐏾
U+1650–165F	𐏿	𐐀	𐐁	𐐂	𐐃	𐐄	𐐅	𐐆	𐐇	𐐈	𐐉	𐐊	𐐋	𐐌	𐐍	𐐎
U+1660–166F	𐐏	𐐐	𐐑	𐐒	𐐓	𐐔	𐐕	𐐖	𐐗	𐐘	𐐙	𐐚	𐐛	𐐜	𐐝	𐐞
U+1670–167F	𐐟	𐐠	𐐡	𐐢	𐐣	𐐤	𐐥	𐐦	𐐧	𐐨	𐐩	𐐪	𐐫	𐐬	𐐭	𐐮

Ogham

U+1680–168F	𐌠	𐌡	𐌢	𐌣	𐌤	𐌥	𐌦	𐌧	𐌨	𐌩	𐌪	𐌫	𐌬	𐌭	𐌮	𐌯
U+1690–169F	𐌰	𐌱	𐌲	𐌳	𐌴	𐌵	𐌶	𐌷	𐌸	𐌹	𐌺	𐌻	𐌼	𐌽	𐌾	𐌿

Runic

U+16A0–16AF	𐌰	𐌱	𐌲	𐌳	𐌴	𐌵	𐌶	𐌷	𐌸	𐌹	𐌺	𐌻	𐌼	𐌽	𐌾	𐌿
U+16B0–16BF	𐌰	𐌱	𐌲	𐌳	𐌴	𐌵	𐌶	𐌷	𐌸	𐌹	𐌺	𐌻	𐌼	𐌽	𐌾	𐌿
U+16C0–16CF	𐌰	𐌱	𐌲	𐌳	𐌴	𐌵	𐌶	𐌷	𐌸	𐌹	𐌺	𐌻	𐌼	𐌽	𐌾	𐌿
U+16D0–16DF	𐌰	𐌱	𐌲	𐌳	𐌴	𐌵	𐌶	𐌷	𐌸	𐌹	𐌺	𐌻	𐌼	𐌽	𐌾	𐌿
U+16E0–16EF	𐌰	𐌱	𐌲	𐌳	𐌴	𐌵	𐌶	𐌷	𐌸	𐌹	𐌺	𐌻	𐌼	𐌽	𐌾	𐌿
U+16F0–16FF	𐌰	𐌱	𐌲	𐌳	𐌴	𐌵	𐌶	𐌷	𐌸	𐌹	𐌺	𐌻	𐌼	𐌽	𐌾	𐌿

Table 4: JuliaMono-Regular.ttf *cont.*[illegible]

Buginese

U+1AB0-1ABF XX / / () () () W

Balinese

U+1C80 - 1C8F	ᄠ	ᄡ	ᄢ	ᄣ	ᄤ	ᄥ	ᄦ	ᄧ	ᄨ	ᄩ	ᄪ	ᄫ	ᄬ	ᄭ
U+1C90 - 1C9F	ᄮ	ᄯ	ᄰ	ᄱ	ᄲ	ᄳ	ᄴ	ᄵ	ᄶ	ᄷ	ᄸ	ᄹ	ᄺ	ᄻ
U+1CA0 - 1CAF	ᄼ	ᄽ	ᄾ	ᄿ	ᅀ	ᅁ	ᅂ	ᅃ	ᅄ	ᅅ	ᅆ	ᅇ	ᅈ	ᅉ
U+1CB0 - 1CBF	ᅊ	ᅋ	ᅌ	ᅍ	ᅎ	ᅏ	ᅐ	ᅑ	ᅒ	ᅓ	ᅔ	ᅕ	ᅖ	ᅗ

Phonetic Extensions

U+1D00 - 1D0F	A	Æ	æ	Ⓐ	C	D	Ð	E	З	!	J	K	Ł	M	И	O
U+1D10 - 1D1F	Ɔ	О	Ɔ	Ɔ	Ɔ	Ɔ	Ɔ	Ɔ	Ɔ	Ɔ	Ɔ	Ɔ	Ɔ	Ɔ	Ɔ	Ɔ
U+1D20 - 1D2F	V	W	Z	З	З	З	Г	Λ	Π	Р	Ψ	Л	А	Æ	В	Ⓐ
U+1D30 - 1D3F	D	E	Э	G	H	I	J	K	L	M	N	И	O	У	Р	R
U+1D40 - 1D4F	T	U	W	a	e	ɑ	æ	b	d	e	ə	ε	з	g	!	k
U+1D50 - 1D5F	m	η	ο	ɔ	ˆ	˘	p	t	u	ɔ	ш	v	ɐ	β	γ	δ
U+1D60 - 1D6F	φ	χ	i	r	u	v	β	γ	ρ	φ	χ	œ	ʔ	ɗ	f	Ⓜ
U+1D70 - 1D7F	Ⓜ	p	f	f	s	t	z	ɔ	ʰ	ɔ	ʰ	ɔ	ʰ	ɔ	ʰ	ɔ

Phonetic Extensions Supplement

U+1D80–1D8F b d f g k l m n p r s ſ y x z a

U+1D90–1D9F α ϛ ε ε ε a i Ϸ ϣ u z ^D ^C ^G ^ø ³

U+1DA0–1DAF ƒ ɓ ɡ ɥ ɨ ɪ ɛ ɞ ɬ ɭ ɮ ɯ ɰ ɶ ɷ

Table 4: JuliaMono-Regular.ttf *cont.*

	0	1	2	3	4	5	6	7	8	9	A	B	C	D	E	F
U+1DB0–1DBF	N	Ŋ	Ŋ̇	Ŋ̈	Ŋ̉	Ŋ̊	Ŋ̋	Ŋ̌	Ŋ̍	Ŋ̎	Ŋ̏	Ŋ̐	Ŋ̑	Ŋ̒	Ŋ̓	Ŋ̔

Combining Diacritical Marks Supplement

U+1DC0–1DCF	◌̐	◌̑	◌̒	◌̓	◌̔	◌̕	◌̖	◌̗	◌̘	◌̙	◌̚	◌̛	◌̜	◌̝	◌̞	◌̟
U+1DD0–1DDF	◌̠	◌̡	◌̢	◌̣	◌̤	◌̥	◌̦	◌̧	◌̨	◌̩	◌̪	◌̫	◌̬	◌̭	◌̮	◌̯
U+1DE0–1DEF	◌̰	◌̱	◌̲	◌̳	◌̴	◌̵	◌̶	◌̷	◌̸	◌̹	◌̺	◌̻	◌̼	◌̽	◌̾	◌̿
U+1DF0–1DFF	◌̿	◌̐	◌̑	◌̒	◌̓	◌̔	◌̕	◌̖	◌̗	◌̘	◌̙	◌̚	◌̛	◌̜	◌̝	◌̞

Latin Extended Additional

U+1E00–1E0F	À	á	Â	à	Å	ä	Ä	å	Ā	ā	Ă	ă	Ą	ą	Ȧ	ȧ
U+1E10–1E1F	Ȧ	ȧ	Ȩ	ȩ	Ȫ	ȫ	Ȭ	ȭ	Ȯ	ȯ	Ȱ	ȱ	Ȳ	ȳ	ȴ	ȵ
U+1E20–1E2F	Ȭ	ȭ	Ȯ	ȯ	Ȱ	ȱ	Ȳ	ȳ	ȴ	ȵ	ȶ	ȷ	ȸ	ȹ	Ⱥ	Ȼ
U+1E30–1E3F	Ⱥ	Ȼ	ȼ	Ƚ	Ⱦ	ȿ	Ⱦ	ȿ	Ⱦ	ȿ	Ⱦ	ȿ	Ⱦ	ȿ	Ⱦ	ȿ
U+1E40–1E4F	Ⱦ	ȿ	Ⱦ	ȿ	Ⱦ	ȿ	Ⱦ	ȿ	Ⱦ	ȿ	Ⱦ	ȿ	Ⱦ	ȿ	Ⱦ	ȿ
U+1E50–1E5F	Ⱦ	ȿ	Ⱦ	ȿ	Ⱦ	ȿ	Ⱦ	ȿ	Ⱦ	ȿ	Ⱦ	ȿ	Ⱦ	ȿ	Ⱦ	ȿ
U+1E60–1E6F	Ⱦ	ȿ	Ⱦ	ȿ	Ⱦ	ȿ	Ⱦ	ȿ	Ⱦ	ȿ	Ⱦ	ȿ	Ⱦ	ȿ	Ⱦ	ȿ
U+1E70–1E7F	Ⱦ	ȿ	Ⱦ	ȿ	Ⱦ	ȿ	Ⱦ	ȿ	Ⱦ	ȿ	Ⱦ	ȿ	Ⱦ	ȿ	Ⱦ	ȿ
U+1E80–1E8F	Ⱦ	ȿ	Ⱦ	ȿ	Ⱦ	ȿ	Ⱦ	ȿ	Ⱦ	ȿ	Ⱦ	ȿ	Ⱦ	ȿ	Ⱦ	ȿ
U+1E90–1E9F	Ⱦ	ȿ	Ⱦ	ȿ	Ⱦ	ȿ	Ⱦ	ȿ	Ⱦ	ȿ	Ⱦ	ȿ	Ⱦ	ȿ	Ⱦ	ȿ
U+1EA0–1EAF	Ⱦ	ȿ	Ⱦ	ȿ	Ⱦ	ȿ	Ⱦ	ȿ	Ⱦ	ȿ	Ⱦ	ȿ	Ⱦ	ȿ	Ⱦ	ȿ
U+1EB0–1EBF	Ⱦ	ȿ	Ⱦ	ȿ	Ⱦ	ȿ	Ⱦ	ȿ	Ⱦ	ȿ	Ⱦ	ȿ	Ⱦ	ȿ	Ⱦ	ȿ
U+1EC0–1ECF	Ⱦ	ȿ	Ⱦ	ȿ	Ⱦ	ȿ	Ⱦ	ȿ	Ⱦ	ȿ	Ⱦ	ȿ	Ⱦ	ȿ	Ⱦ	ȿ
U+1ED0–1EDF	Ⱦ	ȿ	Ⱦ	ȿ	Ⱦ	ȿ	Ⱦ	ȿ	Ⱦ	ȿ	Ⱦ	ȿ	Ⱦ	ȿ	Ⱦ	ȿ
U+1EE0–1EEF	Ⱦ	ȿ	Ⱦ	ȿ	Ⱦ	ȿ	Ⱦ	ȿ	Ⱦ	ȿ	Ⱦ	ȿ	Ⱦ	ȿ	Ⱦ	ȿ
U+1EF0–1EFF	Ⱦ	ȿ	Ⱦ	ȿ	Ⱦ	ȿ	Ⱦ	ȿ	Ⱦ	ȿ	Ⱦ	ȿ	Ⱦ	ȿ	Ⱦ	ȿ

Greek Extended

U+1F00–1F0F	Ά	ά	Έ	έ	Ή	ή	Ί	ί	Ό	ό	ΰ	ϋ	Ϙ	ϙ	Ϛ	ϛ
-------------	---	---	---	---	---	---	---	---	---	---	---	---	---	---	---	---

Table 4: JuliaMono-Regular.ttf *cont.*

	0	1	2	3	4	5	6	7	8	9	A	B	C	D	E	F
U+1F10–1F1F	É	Ê	Ë	Ě	Ė	Ž	-	-	Ɛ	Ɛ	Ǝ	Ǝ	Ǝ	Ǝ	-	-
U+1F20–1F2F	Ħ	Ħ	Ħ	Ħ	Ħ	Ħ	Ħ	Ħ	Ħ	Ħ	Ħ	Ħ	Ħ	Ħ	Ħ	Ħ
U+1F30–1F3F	İ	İ	İ	İ	İ	İ	İ	İ	İ	İ	İ	İ	İ	İ	İ	İ
U+1F40–1F4F	Ó	Ó	Ô	Ô	Õ	Ö	-	-	Ɔ	Ɔ	Ɔ	Ɔ	Ɔ	Ɔ	-	-
U+1F50–1F5F	Ù	Ù	Ú	Ú	Û	Ü	Ü	Ü	-	Ƴ	-	Ƴ	-	Ƴ	-	Ƴ
U+1F60–1F6F	Ẁ	ẁ	Ẃ	ẃ	Ẅ	ẅ	Ẇ	ẇ	Ẉ	ẉ	Ẋ	ẋ	Ẍ	ẍ	Ẏ	ẏ
U+1F70–1F7F	Ǻ	ǻ	Ǽ	ǽ	ǿ	Ǿ	ǿ	ǿ	ǿ	ǿ	ǿ	ǿ	ǿ	ǿ	ǿ	ǿ
U+1F80–1F8F	Ǻ	ǻ	Ǽ	ǽ	ǿ	Ǿ	ǿ	ǿ	ǿ	ǿ	ǿ	ǿ	ǿ	ǿ	ǿ	ǿ
U+1F90–1F9F	Ǻ	ǻ	Ǽ	ǽ	ǿ	Ǿ	ǿ	ǿ	ǿ	ǿ	ǿ	ǿ	ǿ	ǿ	ǿ	ǿ
U+1FA0–1FAF	Ẁ	ẁ	Ẃ	ẃ	Ẅ	ẅ	Ẇ	ẇ	Ẉ	ẉ	Ẋ	ẋ	Ẍ	ẍ	Ẏ	ẏ
U+1FB0–1FBF	Ǻ	ǻ	Ǽ	ǽ	ǿ	-	ǿ	ǿ	ǿ	ǿ	ǿ	ǿ	ǿ	ǿ	ǿ	ǿ
U+1FC0–1FCF	˜	˜	˜	˜	˜	-	˜	˜	˜	˜	˜	˜	˜	˜	˜	˜
U+1FD0–1FDF	İ	İ	İ	İ	-	-	İ	İ	İ	İ	İ	İ	İ	İ	İ	İ
U+1FE0–1FEF	Û	Ü	Ü	Ü	Û	Û	Û	Û	Û	Û	Û	Û	Û	Û	Û	Û
U+1FF0–1FFF	-	-	Ẁ	ẁ	Ẃ	-	ẃ	Ẅ	ẅ	Ẇ	ẇ	Ẉ	ẉ	Ẋ	ẋ	-

General Punctuation

U+2000–200F																
U+2010–201F	–	–	–	–	–	–		=	‘	’	,	‘	“	”	”	”
U+2020–202F	†	‡	•	▶	•	•	•	•								
U+2030–203F	‰	‰	’	”	”	”	”	”	^	()	※	!!	?	-	˘
U+2040–204F	ˆ	ˆ	ˆ	ˆ	ˆ	ˆ	ˆ	ˆ	ˆ	ˆ	ˆ	ˆ	ˆ	ˆ	ˆ	ˆ
U+2050–205F	ˆ	ˆ	ˆ	ˆ	ˆ	ˆ	ˆ	ˆ	ˆ	ˆ	ˆ	ˆ	ˆ	ˆ	ˆ	ˆ
U+2060–206F	-	-	-	-	-	-	-	-	-	-	-	-	-	-	-	-

Superscripts and Subscripts

U+2070–207F	0	1	2	3	4	5	6	7	8	9	+	-	=	()	n
U+2080–208F	0	1	2	3	4	5	6	7	8	9	+	-	=	()	-
U+2090–209F	a	e	o	x	ə	h	k	l	m	n	p	s	t	-	-	-

Table 4: JuliaMono-Regular.ttf *cont.*

	0	1	2	3	4	5	6	7	8	9	A	B	C	D	E	F
Currency Symbols																
U+20A0–20AF	₠	₡	₢	₣	₤	₥	₦	₧	₨	₩	₪	₫	€	₭	₮	₯
U+20B0–20BF	₰	₱	₲	₳	₴	₵	₶	₷	₸	₹	₺	₻	₼	₽	₾	₿
Combining Diacritical Marks for Symbols																
U+20D0–20DF	↵	➡			↶	↷	↵	➡	○	◊	◊	○	□	◇
U+20E0–20EF	◊	↵	◻	◻	△	\		┐	...	┐	←	//	↵	↵	←	➡
U+20F0–20FF	*	-	-	-	-	-	-	-	-	-	-	-	-	-	-	-
Letterlike Symbols																
U+2100–210F	ℳ	℔	ℭ	℮	ℱ	Ⅎ	ℳ	ℴ	ℵ	ℶ	ℷ	ℸ	ℹ	℺	℻	ℼ
U+2110–211F	ℽ	ℾ	ℿ	ℿ	ℿ	ℿ	ℿ	ℿ	ℿ	ℿ	ℿ	ℿ	ℿ	ℿ	ℿ	ℿ
U+2120–212F	SM	TEL	TM	ℵ	ℶ	ℷ	ℸ	ℹ	℺	℻	ℼ	ℽ	ℾ	ℿ	ℿ	ℿ
U+2130–213F	ℽ	ℾ	ℿ	ℿ	ℿ	ℿ	ℿ	ℿ	ℿ	ℿ	ℿ	ℿ	ℿ	ℿ	ℿ	ℿ
U+2140–214F	ℽ	ℾ	ℿ	ℿ	ℿ	ℿ	ℿ	ℿ	ℿ	ℿ	ℿ	ℿ	ℿ	ℿ	ℿ	ℿ
Number Forms																
U+2150–215F	⅓	⅓	⅓	⅓	⅓	⅓	⅓	⅓	⅓	⅓	⅓	⅓	⅓	⅓	⅓	⅓
U+2160–216F	I	II	III	IV	V	VI	VII	VIII	IX	X	XI	XII	L	C	D	M
U+2170–217F	i	ii	iii	iv	v	vi	vii	viii	ix	x	xi	xii	l	c	d	m
U+2180–218F	ℳ	℔	ℭ	℮	ℱ	Ⅎ	ℳ	ℴ	ℵ	ℶ	ℷ	ℸ	ℹ	℺	℻	ℼ
Arrows																
U+2190–219F	←	↑	→	↓	↔	↕	↖	↗	↘	↙	↞	↠	↡	↢	↣	↤
U+21A0–21AF	➡	➢	➤	➥	➦	➧	➨	➩	➪	➫	➬	➭	➮	➯	➰	➱
U+21B0–21BF	↵	↶	↷	↸	↹	↺	↻	↼	↽	↾	↿	↰	↱	↲	↳	↴
U+21C0–21CF	➡	➢	➤	➥	➦	➧	➨	➩	➪	➫	➬	➭	➮	➯	➰	➱
U+21D0–21DF	↵	↶	↷	↸	↹	↺	↻	↼	↽	↾	↿	↰	↱	↲	↳	↴
U+21E0–21EF	↵	↶	↷	↸	↹	↺	↻	↼	↽	↾	↿	↰	↱	↲	↳	↴

Table 4: JuliaMono-Regular.ttf *cont.*

	0	1	2	3	4	5	6	7	8	9	A	B	C	D	E	F
Box Drawing																
U+2500 – 250F	─	─								
U+2510 – 251F	┌	┌	┌	┌	┌	┌	┌	┌	┌	┌	┌	┌	┌	┌	┌	┌
U+2520 – 252F	┐	┐	┐	┐	┐	┐	┐	┐	┐	┐	┐	┐	┐	┐	┐	┐
U+2530 – 253F	└	└	└	└	└	└	└	└	└	└	└	└	└	└	└	└
U+2540 – 254F	┘	┘	┘	┘	┘	┘	┘	┘	┘	┘	┘	┘	┘	┘	┘	┘
U+2550 – 255F	═	═	═	═	═	═	═	═	═	═	═	═	═	═	═	═
U+2560 – 256F	╔	╔	╔	╔	╔	╔	╔	╔	╔	╔	╔	╔	╔	╔	╔	╔
U+2570 – 257F	╕	╕	╕	╕	╕	╕	╕	╕	╕	╕	╕	╕	╕	╕	╕	╕
Block Elements																
U+2580 – 258F	■	■	■	■	■	■	■	■	■	■	■	■	■	■	■	■
U+2590 – 259F	▀	▀	▀	▀	▀	▀	▀	▀	▀	▀	▀	▀	▀	▀	▀	▀
Geometric Shapes																
U+25A0 – 25AF	■	□	□	■	▤	▥	▦	▧	▨	▩	■	□	▤	▥	▦	▧
U+25B0 – 25BF	▴	▴	▴	▴	▴	▴	▴	▴	▴	▴	▴	▴	▴	▴	▴	▴
U+25C0 – 25CF	◀	◀	◀	◀	◀	◀	◀	◀	◀	◀	◀	◀	◀	◀	◀	◀
U+25D0 – 25DF	◐	◐	◐	◐	◐	◐	◐	◐	◐	◐	◐	◐	◐	◐	◐	◐
U+25E0 – 25EF	◑	◑	◑	◑	◑	◑	◑	◑	◑	◑	◑	◑	◑	◑	◑	◑
U+25F0 – 25FF	◒	◒	◒	◒	◒	◒	◒	◒	◒	◒	◒	◒	◒	◒	◒	◒
Miscellaneous Shapes																
U+2600 – 260F	☀	☁	☂	☃	☄	★	☆	<	℞	☉	☊	☋	♂	♀	♂	♀
U+2610 – 261F	☐	☑	☒	☓	☙	☚	☛	☜	☝	☞	☟	☠	☡	☢	☣	☤
U+2620 – 262F	☥	☦	☧	☨	☩	☪	☫	☬	☭	☮	☯	☰	☱	☲	☳	☴
U+2630 – 263F	☵	☶	☷	☸	☹	☺	☻	☼	☽	☾	☿	♈	♉	♊	♋	♌
U+2640 – 264F	♍	♎	♏	♐	♑	♒	♓	♈	♉	♊	♋	♌	♍	♎	♏	♐

Table 4: JuliaMono-Regular.ttf *cont.*[illegible]

Dingbats

[illegible]

Miscellaneous Mathematical Symbols-A

U+27C0 - 27CF ⚡ ⚔ ⚕ ⚖ ⚗ ⚘ ⚙ ⚚ ⛎ ⛏ ⛐ ⛑ ⛒ ⛓ ⛔ ⛕ ⛖ ⛗ ⛘ ⛙ ⛚ ⛛ ⛜ ⛝ ⛞ ⛟ ⛠ ⛡ ⛢ ⛣ ⛤ ⛥ ⛦ ⛧ ⛨ ⛩ ⛪ ⛫ ⛬ ⛭ ⛮ ⛯ ⛰ ⛱ ⛲ ⛳ ⛴ ⛵ ⛶ ⛷ ⛸ ⛹ ⛺ ⛻ ⛼ ⛽ ⛾ ⛿

U+27D0 - 27DF ⚀ ⚁ ⚂ ⚃ ⚄ ⚅ ⚆ ⚇ ⚈ ⚉ ⚊ ⚋ ⚌ ⚍ ⚎ ⚏ ⚐ ⚑ ⚒ ⚓ ⚔ ⚕ ⚖ ⚗ ⚘ ⚙ ⚚ ⚛ ⚜ ⚝ ⚞ ⚟ ⚠ ⚡ ⚢ ⚣ ⚤ ⚥ ⚦ ⚧ ⚨ ⚩ ⚪ ⚫ ⚬ ⚭ ⚮ ⚯ ⚰ ⚱ ⚲ ⚳ ⚴ ⚵ ⚶ ⚷ ⚸ ⚹ ⚺ ⚻ ⚼ ⚽ ⚾ ⚿

Table 4: JuliaMono-Regular.ttf *cont.*

	0	1	2	3	4	5	6	7	8	9	A	B	C	D	E	F
U+27E0 – 27EF	◊	◇	◇	◇	◻	◻	⌈	⌋	⟨	⟩	⟨⟨	⟩⟩	⌈	⌋	[]

Supplemental Arrows-A

U+27F0 – 27FF	⬆	⬇	↺	↻	⊕	←	→	↔	⇐	⇒	⇔	⇐	⇒	⇐	⇒	↔
---------------	---	---	---	---	---	---	---	---	---	---	---	---	---	---	---	---

Braille Patterns

U+2800 – 280F	⠠	⠡	⠢	⠣	⠤	⠥	⠦	⠧	⠨	⠩	⠪	⠫	⠬	⠭	⠮	⠯
U+2810 – 281F	⠰	⠱	⠲	⠳	⠴	⠵	⠶	⠷	⠸	⠹	⠺	⠻	⠼	⠽	⠾	⠿
U+2820 – 282F	⠠	⠡	⠢	⠣	⠤	⠥	⠦	⠧	⠨	⠩	⠪	⠫	⠬	⠭	⠮	⠯
U+2830 – 283F	⠰	⠱	⠲	⠳	⠴	⠵	⠶	⠷	⠸	⠹	⠺	⠻	⠼	⠽	⠾	⠿
U+2840 – 284F	⠠	⠡	⠢	⠣	⠤	⠥	⠦	⠧	⠨	⠩	⠪	⠫	⠬	⠭	⠮	⠯
U+2850 – 285F	⠰	⠱	⠲	⠳	⠴	⠵	⠶	⠷	⠸	⠹	⠺	⠻	⠼	⠽	⠾	⠿
U+2860 – 286F	⠠	⠡	⠢	⠣	⠤	⠥	⠦	⠧	⠨	⠩	⠪	⠫	⠬	⠭	⠮	⠯
U+2870 – 287F	⠰	⠱	⠲	⠳	⠴	⠵	⠶	⠷	⠸	⠹	⠺	⠻	⠼	⠽	⠾	⠿
U+2880 – 288F	⠠	⠡	⠢	⠣	⠤	⠥	⠦	⠧	⠨	⠩	⠪	⠫	⠬	⠭	⠮	⠯
U+2890 – 289F	⠰	⠱	⠲	⠳	⠴	⠵	⠶	⠷	⠸	⠹	⠺	⠻	⠼	⠽	⠾	⠿
U+28A0 – 28AF	⠠	⠡	⠢	⠣	⠤	⠥	⠦	⠧	⠨	⠩	⠪	⠫	⠬	⠭	⠮	⠯
U+28B0 – 28BF	⠰	⠱	⠲	⠳	⠴	⠵	⠶	⠷	⠸	⠹	⠺	⠻	⠼	⠽	⠾	⠿
U+28C0 – 28CF	⠠	⠡	⠢	⠣	⠤	⠥	⠦	⠧	⠨	⠩	⠪	⠫	⠬	⠭	⠮	⠯
U+28D0 – 28DF	⠰	⠱	⠲	⠳	⠴	⠵	⠶	⠷	⠸	⠹	⠺	⠻	⠼	⠽	⠾	⠿
U+28E0 – 28EF	⠠	⠡	⠢	⠣	⠤	⠥	⠦	⠧	⠨	⠩	⠪	⠫	⠬	⠭	⠮	⠯
U+28F0 – 28FF	⠰	⠱	⠲	⠳	⠴	⠵	⠶	⠷	⠸	⠹	⠺	⠻	⠼	⠽	⠾	⠿

Supplemental Arrows-B

U+2900 – 290F	↗	↘	↙	↘	↗	↘	↙	↘	↗	↘	↙	↘	↗	↘	↙	↘
U+2910 – 291F	↗	↘	↙	↘	↗	↘	↙	↘	↗	↘	↙	↘	↗	↘	↙	↘
U+2920 – 292F	↗	↘	↙	↘	↗	↘	↙	↘	↗	↘	↙	↘	↗	↘	↙	↘
U+2930 – 293F	↗	↘	↙	↘	↗	↘	↙	↘	↗	↘	↙	↘	↗	↘	↙	↘
U+2940 – 294F	↗	↘	↙	↘	↗	↘	↙	↘	↗	↘	↙	↘	↗	↘	↙	↘

Table 4: JuliaMono-Regular.ttf *cont.*

	0	1	2	3	4	5	6	7	8	9	A	B	C	D	E	F
U+2950 - 295F	↖	↗	↘	↙	↚	↛	↜	↝	↞	↠	↡	↢	↣	↤	↥	↦
U+2960 - 296F	↧	↨	↩	↪	↫	↬	↭	↮	↯	↰	↱	↲	↳	↴	↵	↶
U+2970 - 297F	↷	↸	↹	↺	↻	↼	↽	↾	↿	↠	↡	↢	↣	↤	↥	↦

Miscellaneous Mathematical Symbols-B

U+2980 - 298F	⋮	●	⊙	↵	↶	↷	↸	↹	↺	↻	⌈	⌋	⌌	⌍
U+2990 - 299F	⌎	↵	↶	↷	↸	↹	↺	↻	⋮	⋷	⋸	⋹	⋺	⋻
U+29A0 - 29AF	↻	↷	↶	↵	⋍	⋎	⋏	↻	↷	↶	↵	↻	↷	↶
U+29B0 - 29BF	⊖	⊗	⊘	⊙	⊚	⊛	⊜	⊝	⊞	⊟	⊠	⊡	⊢	⊣
U+29C0 - 29CF	⊤	⊥	⊦	⊧	⊨	⊩	⊪	⊫	⊬	⊭	⊮	⊯	⊰	⊱
U+29D0 - 29DF	⊲	⊳	⊴	⊵	⊶	⊷	⊸	⊹	⊺	⊻	⊼	⊽	⊾	⊿
U+29E0 - 29EF	⊠	⊡	⊢	⊣	⊤	⊥	⊦	⊧	⊨	⊩	⊪	⊫	⊬	⊭
U+29F0 - 29FF	⊮	⊯	⊰	⊱	⊲	⊳	⊴	⊵	⊶	⊷	⊸	⊹	⊺	⊻

Supplemental Mathematical Operators

U+2A00 - 2A0F	⦿	⊕	⊗	ℰ	ℋ	Π	∪	Λ	ℳ	X	Σ	ƒ	≡	f	ℱ	Ⅎ
U+2A10 - 2A1F	℄	℅	℆	ℇ	℈	℉	ℐ	ℑ	ℓ	ℎ	ℏ	℔	ℓ	℠	◁	⁂
U+2A20 - 2A2F	»		‡	†	‡	+	±	‡	+ ⁻	²	-	÷	÷	¢	₹	×
U+2A30 - 2A3F	×̣	✖	✘	✙	✚	✛	✜	◎	⊖	△	△	△	┐	┌	;	Ⅱ
U+2A40 - 2A4F	ᵀ	ᶤ	ᶥ	ᶦ	ᶧ	ᶨ	ᶩ	ᶬ	ᶭ	ᶮ	ᶯ	ᶰ	ᶱ	ᶲ	ᶴ	ᶷ
U+2A50 - 2A5F	ᵀ	ˆ	˙	˘	˙	˘	˙	√	/	×	^	v	A	V	∞	Δ
U+2A60 - 2A6F	≡	_V	≡	≤	▷	▷	=	=	#	#	~	~	R	R	*	≈
U+2A70 - 2A7F	≈	≡	≡	≈	≡	≡	≡	≡	≡	≡	≡	≡	≡	≡	≡	≡
U+2A80 - 2A8F	≡	≡	≡	≡	≡	≡	≡	≡	≡	≡	≡	≡	≡	≡	≡	≡
U+2A90 - 2A9F	≡	≡	≡	≡	≡	≡	≡	≡	≡	≡	≡	≡	≡	≡	≡	≡
U+2AA0 - 2AAF	≡	≡	≡	≡	≡	≡	≡	≡	≡	≡	≡	≡	≡	≡	≡	≡
U+2AB0 - 2ABF	≡	≡	≡	≡	≡	≡	≡	≡	≡	≡	≡	≡	≡	≡	≡	≡
U+2AC0 - 2ACF	≡	≡	≡	≡	≡	≡	≡	≡	≡	≡	≡	≡	≡	≡	≡	≡
U+2AD0 - 2ADF	D	D	D	U	U	U	U	x	x	E	E	E	E	T	T	T

Table 4: JuliaMono-Regular.ttf *cont.*

	0	1	2	3	4	5	6	7	8	9	A	B	C	D	E	F
U+2AE0-2AEF	⏟	⏞	≡	≧	≦	≣	≢	≡	≠	≡	≡	≡	≡	≡	≡	≡
U+2AF0-2AFF	⌒	⌓	‖	‖	‖	‖	:	◀	▶	≤	≥	//		//		

Miscellaneous Symbols and Arrows

[illegible]

Latin Extended-C

U+2C60–2C6F Ł ł Œ œ Š š Ž ž Ȧ ȧ Ȩ ȩ Ȫ ȫ Ȭ ȭ Ȱ ȱ Ȳ ȳ ȴ ȵ ȶ ȷ ȸ ȹ Ⱥ Ȼ ȼ Ƚ Ⱦ ȿ Ⱥ Ȼ ȼ Ƚ Ⱦ ȿ

Coptic

[illegible]

Table 4: JuliaMono-Regular.ttf *cont.*

	0	1	2	3	4	5	6	7	8	9	A	B	C	D	E	F
Georgian Supplement																
U+2D00 – 2D0F	Ⴀ	Ⴁ	Ⴂ	Ⴃ	Ⴄ	Ⴅ	Ⴆ	Ⴇ	Ⴈ	Ⴉ	Ⴊ	Ⴋ	Ⴌ	Ⴍ	Ⴎ	Ⴏ
U+2D10 – 2D1F	Ⴐ	Ⴑ	Ⴒ	Ⴓ	Ⴔ	Ⴕ	Ⴖ	Ⴗ	Ⴘ	Ⴙ	Ⴚ	Ⴛ	Ⴜ	Ⴝ	Ⴞ	Ⴟ
U+2D20 – 2D2F	Ⴚ	Ⴛ	Ⴜ	Ⴝ	Ⴞ	Ⴟ	-	Ⴚ	-	-	-	-	-	Z	-	-
Tifinagh																
U+2D30 – 2D3F	ⵀ	ⵁ	ⵂ	ⵃ	ⵄ	ⵅ	ⵆ	ⵇ	ⵈ	ⵉ	ⵊ	ⵋ	ⵌ	ⵍ	ⵎ	ⵏ
U+2D40 – 2D4F	ⵐ	ⵑ	ⵒ	ⵓ	ⵔ	ⵕ	ⵖ	ⵗ	ⵘ	ⵙ	ⵚ	ⵛ	ⵜ	ⵝ	ⵞ	ⵟ
U+2D50 – 2D5F	ⵠ	ⵡ	ⵢ	ⵣ	ⵤ	ⵥ	ⵦ	ⵧ	⵨	⵩	⵪	⵫	⵬	⵭	⵮	ⵯ
U+2D60 – 2D6F	⵰	⵱	⵲	⵳	⵴	⵵	⵶	⵷	⵸	⵹	⵺	⵻	⵼	⵽	⵾	⵿
U+2D70 – 2D7F	⵿	-	-	-	-	-	-	-	-	-	-	-	-	-	-
Ethiopic Extended																
U+2DE0 – 2DEF	ᐁ	ᐂ	ᐃ	ᐄ	ᐅ	ᐆ	ᐇ	ᐈ	ᐉ	ᐊ	ᐋ	ᐌ	ᐍ	ᐎ	ᐏ	ᐐ
U+2DF0 – 2DFF	ᐑ	ᐒ	ᐓ	ᐔ	ᐕ	ᐖ	ᐗ	ᐘ	ᐙ	ᐚ	ᐛ	ᐜ	ᐝ	ᐞ	ᐟ	ᐠ
Supplemental Punctuation																
U+2E00 – 2E0F	ᐡ	ᐢ	ᐣ	ᐤ	ᐥ	ᐦ	ᐧ	ᐨ	ᐩ	ᐪ	ᐫ	ᐬ	ᐭ	ᐮ	ᐯ	ᐰ
U+2E10 – 2E1F	ᐱ	ᐲ	ᐳ	ᐴ	ᐵ	ᐶ	ᐷ	ᐸ	ᐹ	ᐺ	ᐻ	ᐼ	ᐽ	ᐾ	ᐿ	ᑀ
U+2E20 – 2E2F	ᑁ	ᑂ	ᑃ	ᑄ	ᑅ	ᑆ	ᑇ	ᑈ	ᑉ	ᑊ	ᑋ	ᑌ	ᑍ	ᑎ	ᑏ	ᑐ
U+2E30 – 2E3F	ᑑ	ᑒ	ᑓ	ᑔ	ᑕ	ᑖ	ᑗ	ᑘ	ᑙ	ᑚ	ᑛ	ᑜ	ᑝ	ᑞ	ᑟ	ᑐ
U+2E40 – 2E4F	ᑠ	ᑡ	ᑢ	ᑣ	ᑤ	ᑥ	ᑦ	ᑧ	ᑨ	ᑩ	ᑪ	ᑫ	ᑬ	ᑭ	ᑮ	ᑯ
U+2E50 – 2E5F	ᑰ	ᑱ	ᑲ	ᑳ	ᑴ	ᑵ	ᑶ	ᑷ	ᑸ	ᑹ	ᑺ	ᑻ	ᑼ	ᑽ	ᑾ	ᑿ
Enclosed CJK Letters and Months																
U+3240 – 324F	-	-	-	-	-	-	-	-	㉿	㊀	㊁	㊂	㊃	㊄	㊅	㊆
U+3250 – 325F	PTE	㊇	㊈	㊉	㊊	㊋	㊌	㊍	㊎	㊏	㊐	㊑	㊒	㊓	㊔	㊕
U+32B0 – 32BF	-	㊖	㊗	㊘	㊙	㊚	㊛	㊜	㊝	㊞	㊟	㊠	㊡	㊢	㊣	㊤

Table 4: JuliaMono-Regular.ttf *cont.*

	0	1	2	3	4	5	6	7	8	9	A	B	C	D	E	F
CJK Compatibility																
U+3370 – 337F	-	hPa	da	AU	bar	oV	pc	dm	dm ²	dm ³	-	-	-	-	-	-
U+3380 – 338F	pA	nA	μA	mA	kA	KB	MB	GB	cal	kcal	pF	nF	μF	μg	mg	kg
U+3390 – 339F	Hz	kHz	MHz	GHz	THz	μL	mL	dL	kL	fm	nm	μm	mm	cm	km	m ²
U+33A0 – 33AF	cm ²	m ²	km ²	mm ³	cm ³	m ³	km ³	m ³ /s	m ³ /s ²	Pa	kPa	MPa	GPa	rad	rad/s	rad/s ²
U+33B0 – 33BF	ps	ns	μs	ms	μV	nV	μV	mV	kV	MV	pW	nW	μW	mW	kW	MW
U+33C0 – 33CF	kΩ	MΩ	am	Bq	cc	cd	C/kg	CO	dB	Gy	ha	HP	in	KK	KM	kt
U+33D0 – 33DF	lm	ln	log	Lx	mb	mL	mol	pH	pm	ppm	PR	sr	Sv	Wb	-	-

Yijing Hexagram Symbols

U+4DC0 – 4DCF	䷀	䷁	䷂	䷃	䷄	䷅	䷆	䷇	䷈	䷉	䷊	䷋	䷌	䷍	䷎	䷏
U+4DD0 – 4DDF	䷐	䷑	䷒	䷓	䷔	䷕	䷖	䷗	䷘	䷙	䷚	䷛	䷜	䷝	䷞	䷟
U+4DE0 – 4DEF	䷠	䷡	䷢	䷣	䷤	䷥	䷦	䷧	䷨	䷩	䷪	䷫	䷬	䷭	䷮	䷯
U+4DF0 – 4DFE	䷰	䷱	䷲	䷳	䷴	䷵	䷶	䷷	䷸	䷹	䷺	䷻	䷼	䷽	䷾	䷿

Yi Radicals

U+A5F0 – A5FF	-	-	-	-	-	-	-	-	-	-	-	-	-	-	-	𠂇
U+A600 – A60F	𠂇	𠂈	𠂉	𠂊	𠂋	𠂌	𠂍	𠂎	𠂏	𠂐	𠂑	𠂒	𠂓	𠂔	𠂕	𠂖
U+A610 – A61F	𠂗	𠂘	𠂙	𠂚	𠂛	𠂜	𠂝	𠂞	𠂟	𠂠	𠂡	𠂢	𠂣	𠂤	𠂥	𠂦
U+A620 – A62F	𠂧	1	𠂩	𠂪	𠂫	𠂬	𠂭	𠂮	𠂯	𠂰	𠂱	𠂲	-	-	-	-
U+A640 – A64F	𠂳	𠂴	𠂵	𠂶	𠂷	𠂸	𠂹	𠂺	𠂻	𠂼	𠂽	𠂾	𠂿	𠃀	𠃁	𠃂
U+A650 – A65F	𠃃	𠃄	𠃅	𠃆	𠃇	𠃈	𠃉	𠃊	𠃋	𠃌	𠃍	𠃎	𠃏	𠃐	𠃑	𠃒
U+A660 – A66F	𠃓	𠃔	𠃕	𠃖	𠃗	𠃘	𠃙	𠃚	𠃛	𠃜	𠃝	𠃞	𠃟	𠃠	𠃡	𠃢
U+A670 – A67F	𠃣	𠃤	𠃥	𠃦	𠃧	𠃨	𠃩	𠃪	𠃫	𠃬	𠃭	𠃮	𠃯	𠃰	𠃱	𠃲
U+A680 – A68F	𠃳	𠃴	𠃵	𠃶	𠃷	𠃸	𠃹	𠃺	𠃻	𠃼	𠃽	𠃾	𠃿	𠄀	𠄁	𠄂
U+A690 – A69F	𠄃	𠄄	𠄅	𠄆	𠄇	𠄈	𠄉	𠄊	𠄋	𠄌	𠄍	𠄎	𠄏	𠄐	𠄑	𠄒

Modifier Tone Letters

U+A700 – A70F	𐀀	𐀁	𐀂	𐀃	𐀄	𐀅	𐀆	𐀇	𐀈	𐀉	𐀊	𐀋	𐀌	𐀍	𐀎	𐀏
---------------	---	---	---	---	---	---	---	---	---	---	---	---	---	---	---	---

Table 4: JuliaMono-Regular.ttf *cont.*

	0	1	2	3	4	5	6	7	8	9	A	B	C	D	E	F
U+A710 – A71F	ḷ	l̤	l̥	l̦	ļ	l̨	l̩	l̪	l̫	l̬	ḽ	l̮	l̯	l̰	ḻ	l̲

Latin Extended-D

U+A720 – A72F	Ŧ	Ũ	Ű	ű	Ų	ų	Ŵ	Ŷ	ŷ	Ÿ	Ź	Ż	Ǝ	Ɛ	Ɔ	Ƅ
U+A730 – A73F	Ɔ	Ƅ	ƅ	Ɔ	ƅ	Ɔ	ƅ	Ɔ	ƅ	Ɔ	ƅ	Ɔ	ƅ	Ɔ	ƅ	Ɔ
U+A740 – A74F	Ɔ	ƅ	Ɔ	ƅ	Ɔ	ƅ	Ɔ	ƅ	Ɔ	ƅ	Ɔ	ƅ	Ɔ	ƅ	Ɔ	ƅ
U+A750 – A75F	Ɔ	ƅ	Ɔ	ƅ	Ɔ	ƅ	Ɔ	ƅ	Ɔ	ƅ	Ɔ	ƅ	Ɔ	ƅ	Ɔ	ƅ
U+A760 – A76F	Ɔ	ƅ	Ɔ	ƅ	Ɔ	ƅ	Ɔ	ƅ	Ɔ	ƅ	Ɔ	ƅ	Ɔ	ƅ	Ɔ	ƅ
U+A770 – A77F	Ɔ	ƅ	Ɔ	ƅ	Ɔ	ƅ	Ɔ	ƅ	Ɔ	ƅ	Ɔ	ƅ	Ɔ	ƅ	Ɔ	ƅ
U+A780 – A78F	Ɔ	ƅ	Ɔ	ƅ	Ɔ	ƅ	Ɔ	ƅ	Ɔ	ƅ	Ɔ	ƅ	Ɔ	ƅ	Ɔ	ƅ
U+A790 – A79F	Ɔ	ƅ	Ɔ	ƅ	Ɔ	ƅ	Ɔ	ƅ	Ɔ	ƅ	Ɔ	ƅ	Ɔ	ƅ	Ɔ	ƅ
U+A7A0 – A7AF	Ɔ	ƅ	Ɔ	ƅ	Ɔ	ƅ	Ɔ	ƅ	Ɔ	ƅ	Ɔ	ƅ	Ɔ	ƅ	Ɔ	ƅ
U+A7B0 – A7BF	Ɔ	ƅ	Ɔ	ƅ	Ɔ	ƅ	Ɔ	ƅ	Ɔ	ƅ	Ɔ	ƅ	Ɔ	ƅ	Ɔ	ƅ
U+A7C0 – A7CF	Ɔ	ƅ	Ɔ	ƅ	Ɔ	ƅ	Ɔ	ƅ	Ɔ	ƅ	Ɔ	ƅ	Ɔ	ƅ	Ɔ	ƅ
U+A7D0 – A7DF	Ɔ	ƅ	Ɔ	ƅ	Ɔ	ƅ	Ɔ	ƅ	Ɔ	ƅ	Ɔ	ƅ	Ɔ	ƅ	Ɔ	ƅ
U+A7E0 – A7EF	Ɔ	ƅ	Ɔ	ƅ	Ɔ	ƅ	Ɔ	ƅ	Ɔ	ƅ	Ɔ	ƅ	Ɔ	ƅ	Ɔ	ƅ

Rejang

U+A950 – A95F	-	-	-	-	-	-	-	-	-	-	-	-	-	-	-	ᮊ
---------------	---	---	---	---	---	---	---	---	---	---	---	---	---	---	---	---

Cham

U+AA50 – AA5F	-	-	-	-	-	-	-	-	-	-	-	-	ᮊ	-	-	-
---------------	---	---	---	---	---	---	---	---	---	---	---	---	---	---	---	---

LatinExtended-E

U+AB30 – AB3F	ᮊ	ᮋ	ᮌ	ᮍ	ᮎ	ᮏ	ᮐ	ᮑ	ᮒ	ᮓ	ᮔ	ᮕ	ᮖ	ᮗ	ᮘ	ᮙ
U+AB40 – AB4F	ᮊ	ᮋ	ᮌ	ᮍ	ᮎ	ᮏ	ᮐ	ᮑ	ᮒ	ᮓ	ᮔ	ᮕ	ᮖ	ᮗ	ᮘ	ᮙ
U+AB50 – AB5F	ᮊ	ᮋ	ᮌ	ᮍ	ᮎ	ᮏ	ᮐ	ᮑ	ᮒ	ᮓ	ᮔ	ᮕ	ᮖ	ᮗ	ᮘ	ᮙ
U+AB60 – AB6F	ᮊ	ᮋ	ᮌ	ᮍ	ᮎ	ᮏ	ᮐ	ᮑ	ᮒ	ᮓ	ᮔ	ᮕ	ᮖ	ᮗ	ᮘ	ᮙ

Table 4: JuliaMono-Regular.ttf *cont.*

	0	1	2	3	4	5	6	7	8	9	A	B	C	D	E	F
	Private Use Area															
U+E0A0 – E0AF	?	L	lock	C	-	-	-	-	-	-	-	-	-	-	-	-
U+E0B0 – E0BF	▶	>	◀	<	◐)	◑	(◓	\	◔	/	◕	/	◖	\
U+E230 – E23F	-	-	-	-	-	-	-	-	-	-	-	-	-	-	🔒	-
U+E250 – E25F	-	-	-	-	-	-	🔥	-	-	-	-	-	-	-	-	-
U+E270 – E27F	-	-	-	-	-	💧	-	-	-	-	-	-	-	-	-	-
U+E600 – E60F	-	-	-	-	-	-	☸	-	🐼	📺	-	-	js	-	<>	-
U+E610 – E61F	-	🍏	☰	🏠	#	*	-	-	-	-	-	-	Ⓒ	Ⓓ	-	-
U+E620 – E62F	-	-	-	-	⋯	-	🗑️	-	-	🏠	✓	☒	-	-	-	-
U+E700 – E70F	-	-	-	-	-	-	-	-	-	🔒	-	-	-	-	-	-
U+E710 – E71F	-	🍏	🐧	-	-	-	-	-	-	-	-	-	-	-	-	-
U+E720 – E72F	-	-	-	-	-	🔑	🔑	🔑	🔑	🔑	-	-	-	-	-	-
U+E730 – E73F	-	-	-	-	-	-	≡	-	-	-	-	-	-	-	📺	-
U+E760 – E76F	-	-	-	-	-	-	-	-	-	🔒	-	-	-	-	-	-
U+E780 – E78F	-	-	-	-	-	-	-	-	-	😄	-	📺	-	-	-	-
U+E7A0 – E7AF	-	-	-	-	-	-	-	-	🔒	-	-	-	-	-	-	-
U+E800 – E80F	⋯	🍏	⋯	🔒	📺	b	q	q		*	⊥	*	*	*	c	d
U+E810 – E81F	f	g	w	y	z	α	δ	∞	🔒	🔒	🔒	🔒	🔒	🔒	🔒	🔒
U+E820 – E82F	-	-	-	-	-	-	⋯	-	-	-	-	-	-	-	-	-
U+E830 – E83F	🔒	🔒	flux	🔒	con	🔒	🔒	🔒	🔒	🔒	-	-	-	-	-	-
U+E840 – E84F	🔒	🔒	🔒	🔒	🔒	-	-	-	-	-	-	-	-	-	-	-
U+E850 – E85F	⋯	⋯	⋯	⋯	⋯	⋯	⋯	⋯	⋯	⋯	⋯	⋯	-	-	-	-
U+EE00 – EE0F	☐	☐	☐	☐	☐	☐	☐	☐	☐	☐	☐	☐	-	-	-	-
U+F000 – F00F	-	-	-	-	-	-	-	-	-	🐦	-	-	-	-	-	-

Table 4: JuliaMono-Regular.ttf *cont.*

	0	1	2	3	4	5	6	7	8	9	A	B	C	D	E	F
U+F0C0 – F0CF	-	8	-	-	-	-	-	-	-	-	-	-	-	-	-	-
U+F0F0 – F0FF	-	-	-	-	-	-	-	-	-	-	-	-	-	h	-	-
U+F100 – F10F	-	-	-	-	-	-	-	-	-	-	-	-	€	-	-	-
U+F120 – F12F	>	-	-	-	-	-	-	-	-	-	-	-	-	-	-	-
U+F170 – F17F	-	-	-	-	-	-	-	-	-	Apple	-	-	-	-	-	-
U+F2D0 – F2DF	-	-	-	-	-	-	-	-	-	-	-	-	☼	-	-	-
U+F300 – F30F	-	-	Apple	-	-	-	-	-	☼	-	-	-	-	-	-	-
U+F350 – F35F	-	-	-	-	-	-	-	-	-	-	-	-	-	☼	-	-
U+F410 – F41F	-	-	-	-	-	-	-	-	☼	-	-	-	-	-	-	-
U+F530 – F53F	-	-	-	-	Apple	-	-	-	-	-	-	-	-	-	-	-
U+F6A0 – F6AF	-	-	-	-	☼	-	-	-	-	-	-	-	-	-	-	-
U+F830 – F83F	-	-	-	-	-	-	-	-	-	-	-	-	-	☼	-	-
U+F850 – F85F	-	-	-	-	-	-	-	-	-	-	☼	-	-	-	-	-
U+F8D0 – F8DF	-	-	-	-	-	-	☼	-	-	-	-	-	-	-	-	-
U+F8F0 – F8FF	-	-	-	-	-	-	-	-	-	-	-	-	-	-	-	Apple

Alphabetic Presentation Forms

U+FB00 – FB0F	ff	fi	fl	ffi	ffl	ft	st	-	-	-	-	-	-	-	-	-
U+FB10 – FB1F	-	-	-	וו	וו	וו	וו	וו	-	-	-	-	-	י	י	י
U+FB20 – FB2F	ע	א	ד	ה	כ	ל	ם	ר	ת	+	ש	ש	ש	ש	א	א
U+FB30 – FB3F	א	ב	ג	ד	ה	ו	ז	-	ט	י	ך	כ	ל	-	מ	-
U+FB40 – FB4F	נ	ס	-	פ	פ	-	צ	ק	ר	ש	ת	ו	ו	ו	ו	א

Table 4: JuliaMono-Regular.ttf *cont.*

	0	1	2	3	4	5	6	7	8	9	A	B	C	D	E	F
Arabic Presentation Forms-A																
U+FB80 – FBBF	-	-	•	.	”	..	▲	▼	▲	▼	-	-	-	:	:	-
U+FD30 – FD3F	-	-	-	-	-	-	-	-	-	-	-	-	-	-	﴿	﴾
U+FDFF – FDFF	-	-	-	-	-	-	-	-	-	-	-	-	-	☒	-	-
Combining Half Marks																
U+FE20 – FE2F	◌◌	◌◌	◌◌	◌◌	◌◌	◌◌	◌◌	◌◌	◌◌	◌◌	◌◌	◌◌	◌◌	◌◌	◌◌	◌◌
Small Form Variants																
U+FE50 – FE5F	,	-	.	-	;	:	?	!	-	()	{	}	[]	#
U+FE60 – FE6F	&	*	+	-	<	≥	=	-	\	\$	%	@	-	-	-	-
Arabic Presentation Forms-B																
U+FEF0 – FEF7	-	-	-	-	-	-	-	-	-	-	-	-	-	-	-	-
Specials ...																
U+FFF0 – FFFF	-	-	-	-	-	-	-	-	-	-	☒	☒	☒	☒	-	-

Total number of glyphs shown from JuliaMono-Regular.ttf: 7469